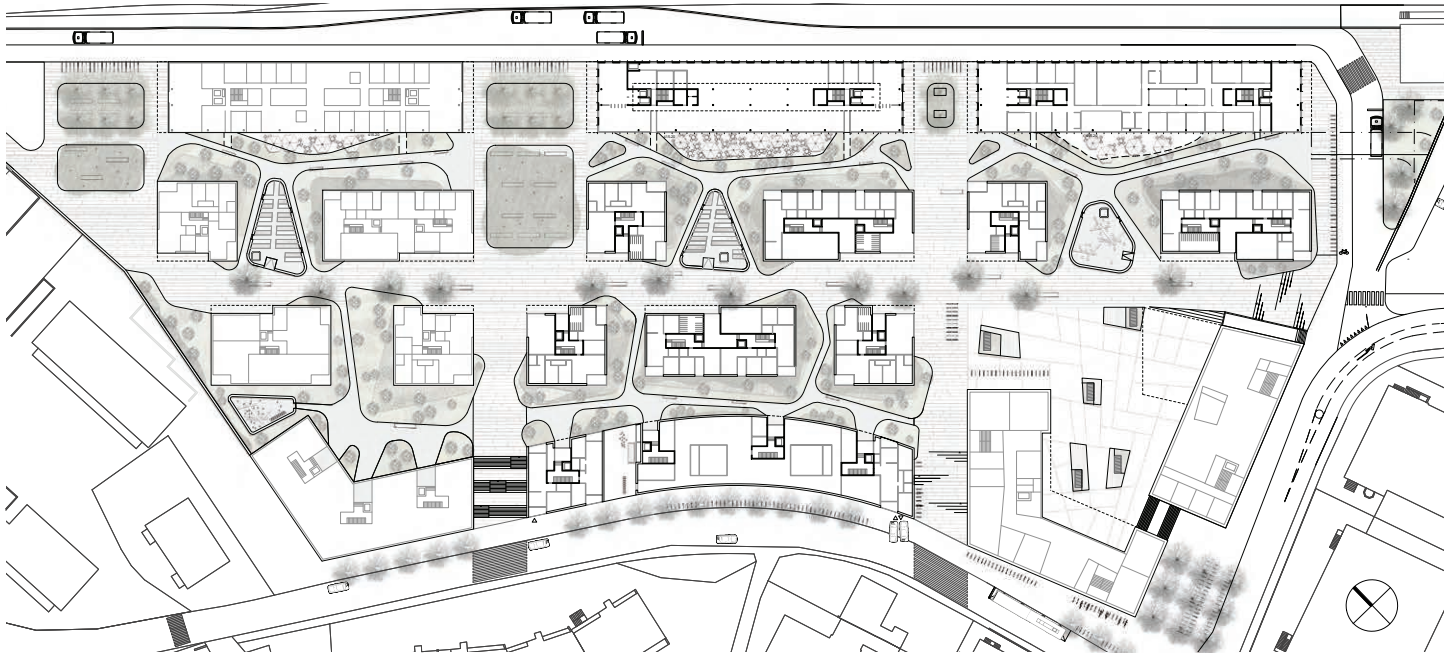


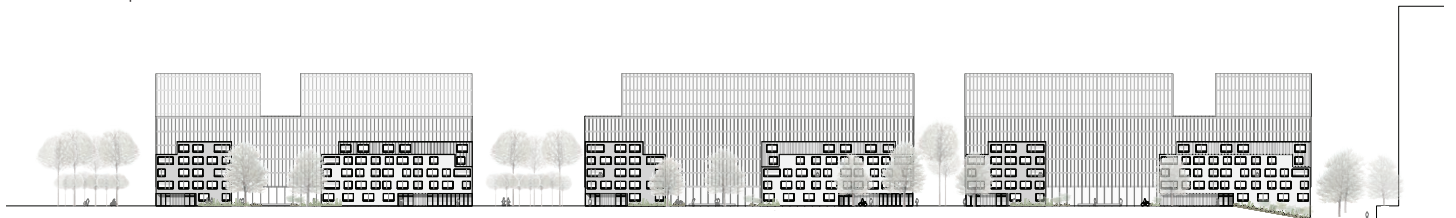


CFF Railway Warehouse Competition Renens

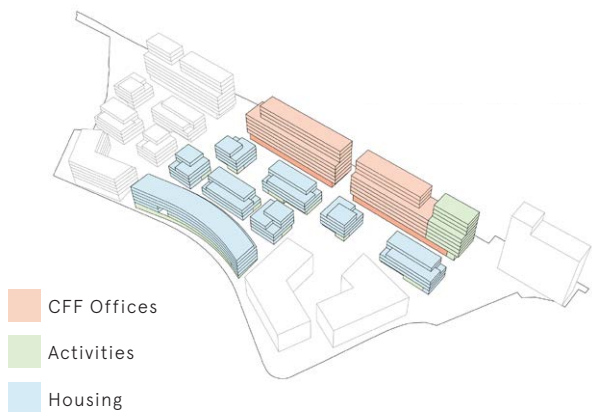
The project aims at creating a coherent ensemble that is dense, attractive and harmonious. Using a rational and precise approach to the built and non-built spaces, it brings a new area to life - clearly defined yet permeable and well connected with the rest of town - in the heart of the heterogeneous urban fabric. The architecture of the various interacting urban entities facilitates combining high density with abundant vegetation and great quality of life for users. Lying along the railway axis, buildings follow the geometry of the lines and are significantly high-rising. They thus contribute to setting the site's boundaries while protecting the neighborhood's heart from noise. The volume and height of buildings within the site are smaller and more like urban villas providing peace and quiet in a sheltered neighborhood.



Groundfloor plan



Section on the main street



- CFF Offices
- Activities
- Housing

CFF Railway Warehouse Competition Renens

Location

Renens

Client

CFF Immobilier

Procedure

Parallel study contract 2015 | Finalist

Program

Creation of a mixed neighborhood combining housing, shops, crafts and office spaces

Assignments

Office areas, restaurant, nursery, housing (urban villas), commercial and craft areas, underground parking

Floor surface SIA 416

Approx. 50'000 m²

Bauart Architects and Planners Ltd

Frei | Graf | Graf | Jakob | Rey | Ringeisen | Ryter

Laupenstrasse 20, 3008 Bern

Telefon +41 31 385 15 15

Crêt-Taconnet 17, 2002 Neuchâtel

Téléphone +41 32 858 15 15

Hardturmstrasse 173, 8005 Zürich

Telefon +41 43 366 65 65

www.bauart.ch

bauart