



Competition Lancy Pont-Rouge Geneva

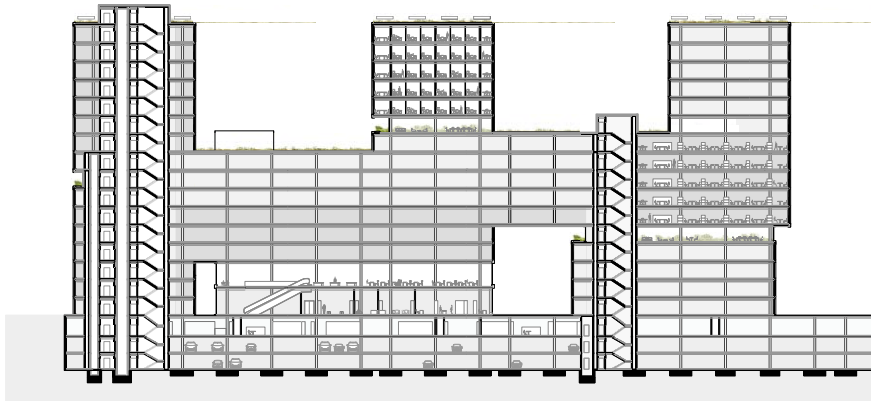
In the immediate vicinity of the new CEVA railway station, the SEMIRAMIS project proposes a new hub organized around public areas in the form of a series of urban terraces and hanging gardens. The esplanade, a covered area with trees planted longitudinally, is bordered by different-sized squares and provides access to all the commercial areas. Above, several interlinked volumes offer a series of multifunctional platforms which are both flexible, in terms of use, and expressive architecturally.



Plan +10



Plan +4



Section



Competition Lancy Pont-Rouge Geneva

Location

Lancy (GE)

Client

CFF Immobilier SA (buildings)
Etat de Genève et Commune de Lancy
(exterior developments)

Program

New buildings (shops, services, leisure, offices),
public areas

Type of mandate

Parallel study contract 2012 | Finalist

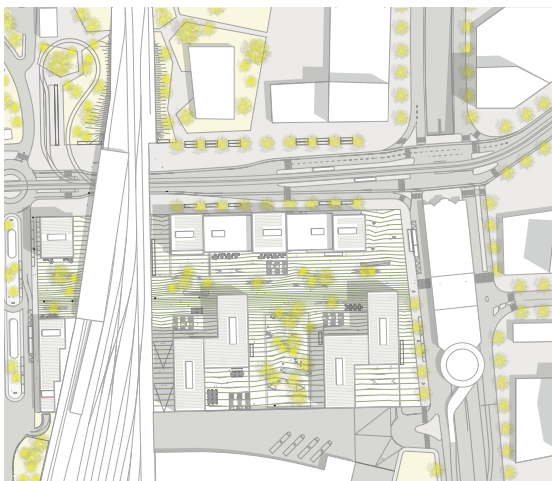
Participants

1st round on pre-qualification | 19 teams
2nd round | 5 teams

Bauart Architects and Planners Ltd
Frei | Graf | Graf | Jakob | Rey | Ringeisen | Ryter

Laupenstrasse 20, 3008 Bern
Telefon +41 31 385 15 15
Crêt-Taconnet 17, 2002 Neuchâtel
Téléphone +41 32 858 15 15
Hardturmstrasse 173, 8005 Zürich
Telefon +41 43 366 65 65

www.bauart.ch



Site plan

bauart