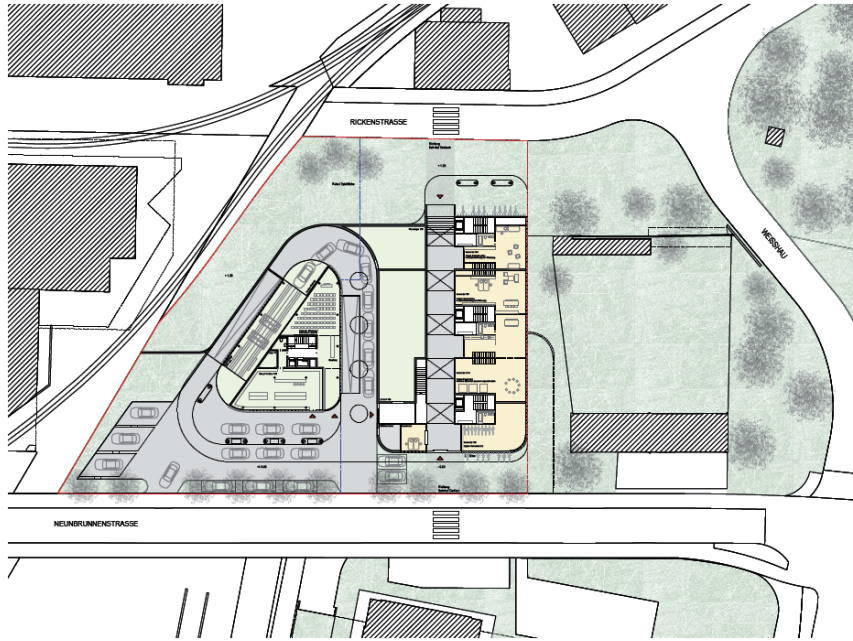
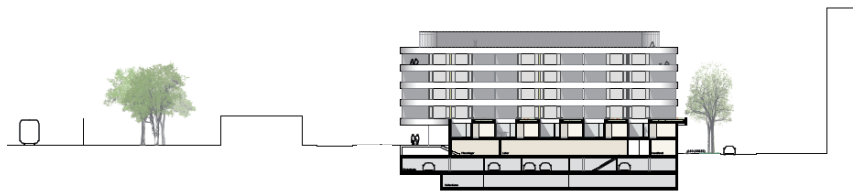




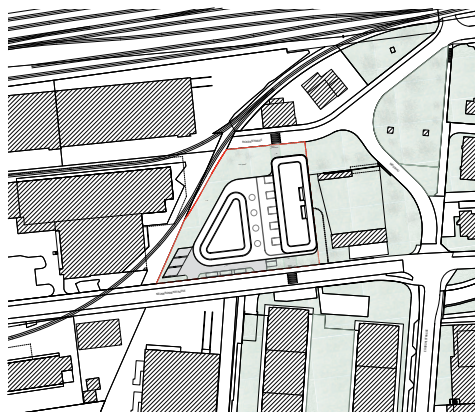
**Study contract for residential and office buildings in Zürich-Seebach** The two volumes are well integrated in the surrounding urban context. On the lower level, a common roof connects the two buildings and provides a base. The latter includes a gas service station, shops, some of the apartments and the entrance area for the upper-level housings. Distributed across two distinct volumes, the administrative spaces and other apartments are hosted in the upper stories. The geometry, the setting and the typology clearly reflect the world of the automobile.



GROUND FLOOR



SECTION



SITUATION

**Study contract for residential and office buildings in Zürich-Seebach**

*Builder*

Osterwalder SA

*Main user*

Avia

*Procedure*

Parallel study contract 2010

*Program*

Service station, apartments, mixed-use areas (workshops, bicycle workshop, children area, offices), administrative area

*Participants*

4

Bauart Architects and Planners Ltd

Frei | Graf | Graf | Jakob | Rey | Ringeisen | Ryter

Laupenstrasse 20, 3008 Bern

T 031 385 15 15

Crêt-Taconnet 17, 2002 Neuchâtel

T 032 858 15 15

Hardturmstrasse 173, 8005 Zürich

T 043 366 65 65

[www.bauart.ch](http://www.bauart.ch)