

Competition for student accommodation and a day nursery «En Cojonnex» Lausanne

The project proposes three “tailor-made” buildings that fit in with the geometry of their direct environment using volumes that adapt to the present context. The free space between the three buildings is both an extension of the neighbouring campus’s public area, a link with the Cojonnex road and a natural breathing space. The solution offered is compatible with future expansion and engages in a dialogue between the landscape and the urban context while giving the new neighbourhood a specific identity.



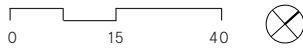
Cross section



Level +4



Level +3



Competition for student accommodation and a day nursery «En Cojonnex» Lausanne

Location

Lausanne

Client

Société immobilière Lausannoise pour le Logement (SILL SA)

Type of procedure

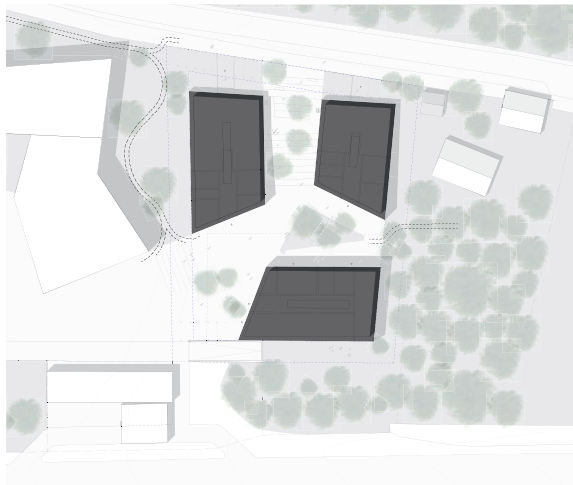
Competition 2014 | 3rd prize

Costs

CHF 30 Mio

Premises program

Student accommodation total BLS
approx. 7'700 m², day nursery



Site plan

Bauart Architects and Planners Ltd

Frei | Graf | Graf | Jakob | Rey | Ringeisen | Ryter

Laupenstrasse 20, 3008 Bern

Telefon +41 31 385 15 15

Crêt-Taconnet 17, 2002 Neuchâtel

Téléphone +41 32 858 15 15

Hardturmstrasse 173, 8005 Zürich

Telefon +41 43 366 65 65

www.bauart.ch

bauart