



## Competition for the new Cardiovascular Centre Inselspital Bern

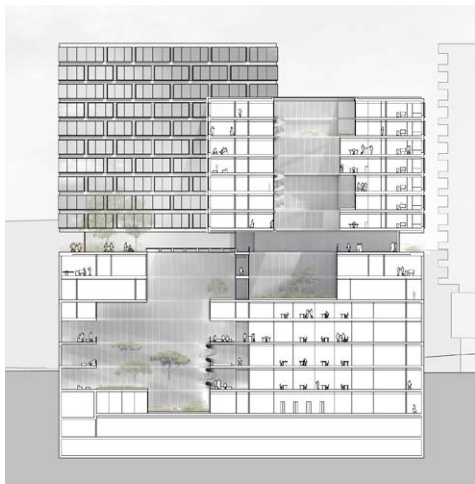
Designed as a compact volume integrated into its urban surroundings, the major hospital facility interacts with its neighbours and responds to the specific nature of its immediate environment. The complex comprises a lower section located in a broad base upon which the upper volumes are positioned. This daring mix results in a coherent whole thanks especially to the creation of a practically transparent intermediary level which serves as a strong visual reference for clear comprehension of the building's different functions.



Ground floor plan



Floor-model plan



Section

0 20 40



Site plan

## Competition for the new Cardiovascular Centre Inselspital Bern

### Location

Bern

### Client

Inselspital Bern University Hospital

### Procedure

Competition 2014 | 1st prize | 2nd rank

### Global costs

CHF 430 Mio

### Program

35'000 m<sup>2</sup>

Bauart Architects and Planners Ltd

Frei | Graf | Graf | Jakob | Rey | Ringeisen | Ryter

Laupenstrasse 20, 3008 Bern

Telefon +41 31 385 15 15

Crêt-Taconnet 17, 2002 Neuchâtel

Téléphone +41 32 858 15 15

Hardturmstrasse 173, 8005 Zürich

Telefon +41 43 366 65 65

[www.bauart.ch](http://www.bauart.ch)

**bauart**