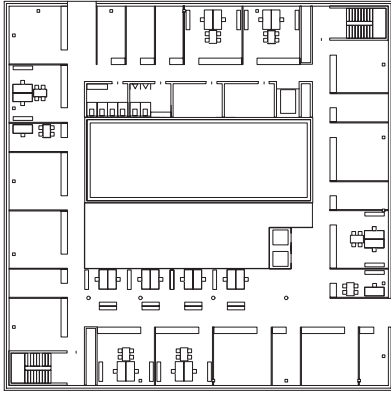
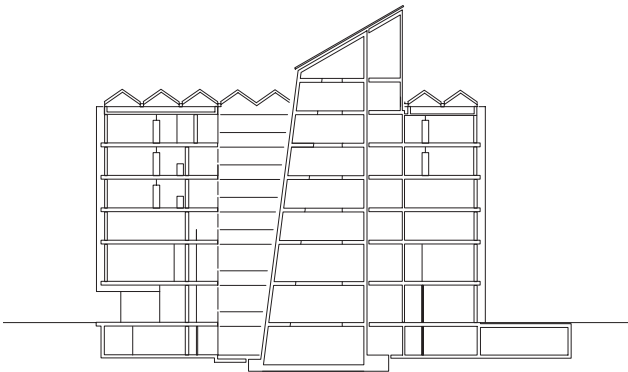
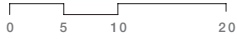


**Competition for the new EAWAG/EMPA building, Dübendorf** The project aims at providing the EAWAG with a building both functional and emblematic of its activities in the water sector. The concept thus proposes a compact monolith organized around a 5'000m<sup>3</sup> central tank, which meets the building's thermal requirements. The design of the façades, whose homogenous appearance reinforces the monolithic character, helps generating a zero heating energy building.



PLAN 3RD FLOOR | THE WATER TANK'S SIZE IS NOTICEABLE BECAUSE OF ITS CLOSE PROXIMITY TO AN AIR SPACE



CROSS SECTION | 600 M<sup>2</sup> OF SOLAR COLLECTORS ARE INTEGRATED INTO THE ROOF



### Competition for the new EAWAG/EMPA building, Dübendorf

#### Client

Office for buildings  
EMPA / EAWAG, Dübendorf

#### Type of procedure

Competition with prequalification  
Program (Floor area FA)

Reception / Exhibition 550m<sup>2</sup>

Training center 1'000m<sup>2</sup>

Library 1'000m<sup>2</sup>

Cafeteria 500m<sup>2</sup>

Administration 2'200m<sup>2</sup>

Photocopy center 300m<sup>2</sup>

Costs BCC 1-9

CHF 29.5 Mio

Participation

6 participants

Team

The project was developed in  
collaboration with Ernst Basler+Partner, Zürich

Bauart Architects and Planners Ltd

Frei | Graf | Graf | Jakob | Rey | Ringeisen | Ryter

Laupenstrasse 20, 3008 Bern

T 031 385 15 15

Crêt-Taconnet 17, 2002 Neuchâtel

T 032 858 15 15

Hardturmstrasse 173, 8005 Zürich

T 043 366 65 65

[www.bauart.ch](http://www.bauart.ch)