

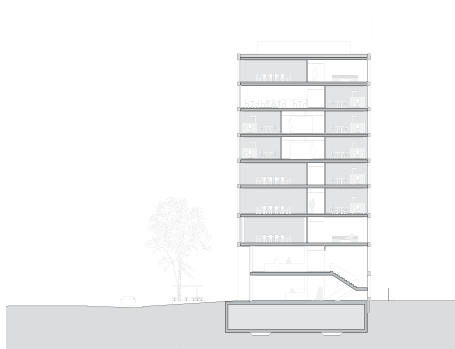
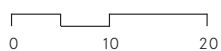


Competition for the new HE campus Delémont

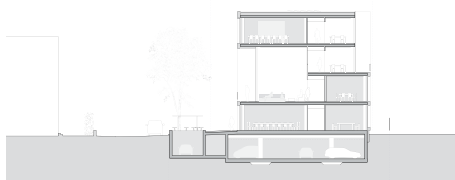
The “Synergia” project is based on a careful reading of the site, which plays an role of interface within the urban fabric of Delémont. Indeed, the building is strategically situated between heterogeneous environments. While developing its own identity, the HE campus building is designed as a “mediator”: it enters in a subtle dialogue with these differentiated urban contexts through precise interactions between the interior program and the surrounding urban elements.



Ground floor plan



Section on the tower



Section on the main building



Site plan

Competition for the new HE campus Delémont

Location

Delémont

Client

SI Campus HE-Jura, Delémont

Type of procedure

Competition with general contractor

General contractor

ERNE AG Holzbau, Laufenburg

Costs of the work (according to competition)

Approx. CHF 45 mio

Bauart Architects and Planners Ltd

Frei | Graf | Graf | Jakob | Rey | Ringeisen | Ryter

Laupenstrasse 20, 3008 Bern

Telefon +41 31 385 15 15

Crêt-Taconnet 17, 2002 Neuchâtel

Téléphone +41 32 858 15 15

Hardturmstrasse 173, 8005 Zürich

Telefon +41 43 366 65 65

www.bauart.ch

bauart