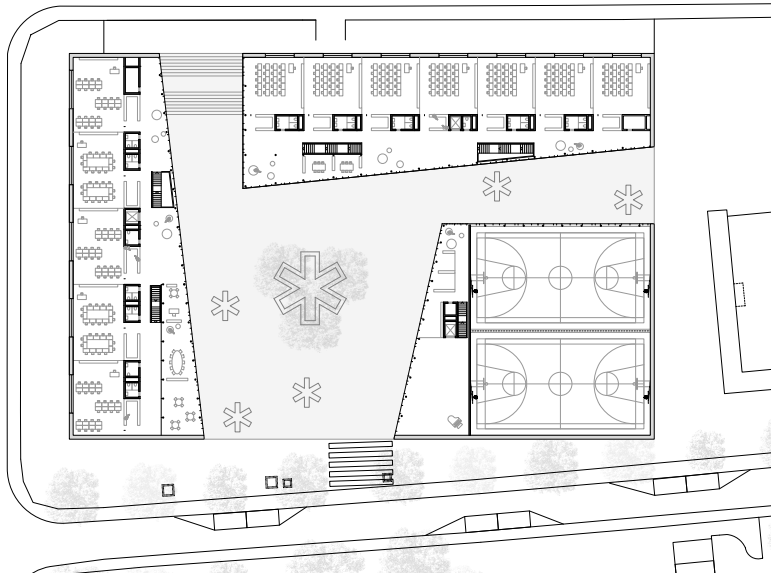


School Complex Romont

The project involves three volumes interacting around a unifying space planned for public use. The geometric cohesion of the three entities provides the new complex with an institutional identity, while making sure the scale of each building is well adapted to its function. Openings on the ground floor of each building provide sheltered areas and facilitate quick and easy identification of the various access points.



Western façade



Ground floor plan



School Complex Romont

Location

Romont

Client

Commune of Romont

Procedure

Competition 2014 | 1st prize

Program

18 primary classes, 8 kindergarten classes, double gym classes, rhythmic, school care, courtyard

Realization

2016 - 2018

Bauart Architects and Planners Ltd

Frei | Graf | Graf | Jakob | Rey | Ringeisen | Ryter

Laupenstrasse 20, 3008 Bern

Telefon +41 31 385 15 15

Crêt-Taconnet 17, 2002 Neuchâtel

Téléphone +41 32 858 15 15

Hardturmstrasse 173, 8005 Zürich

Telefon +41 43 366 65 65

www.bauart.ch

