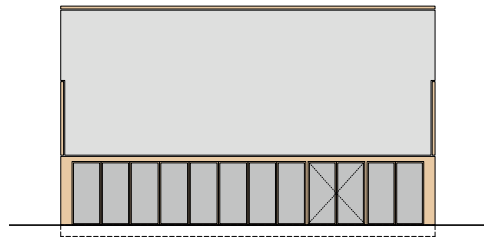


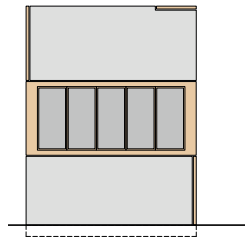


Ballenberg Course Centre Hofstetten

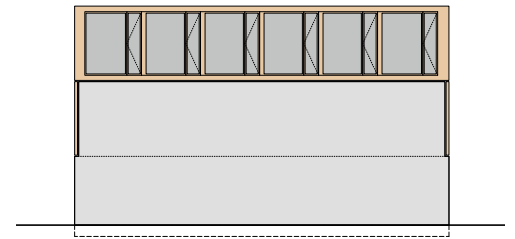
The extension of the Ballenberg Course Centre is planned as a cubic structure with a length of 16.5 m, a width of 7.5 m and a height of just under 11 m. The spatial programme consists essentially of two course rooms, one on the ground floor with a direct reference to the exterior space and a second on the first floor with a view out over the woodland. The second floor accommodates four bedrooms for course leaders with the accompanying bathroom facilities. Each space makes its own specific and unique reference to the outside area. The layout, orientation and scale of the individual spaces endow each area with its own unique character.



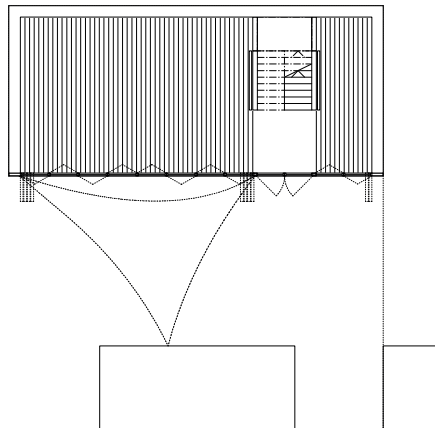
Eastern façade



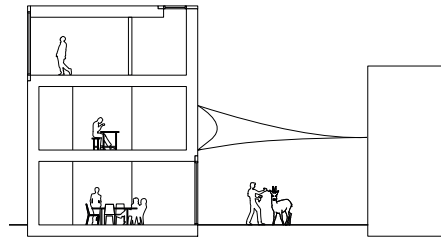
Southern façade



Western façade



Ground floor



Section



Ballenberg Course Centre Hofstetten

Location

Hofstetten

Client

Stiftung Heimatwerkschule Ballenberg

Type of mandate

Competition 2014 | 1st prize

Programme

2 course rooms

1 workshop

1 storage

4 rooms

1 bathroom

Realization

2015 - 2016

Bauart Architects and Planners Ltd

Frei | Graf | Graf | Jakob | Rey | Ringeisen

Laupenstrasse 20, 3008 Bern

Telefon +41 31 385 15 15

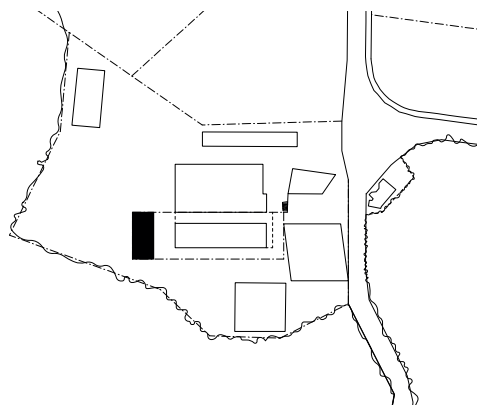
Crêt-Taconnet 17, 2002 Neuchâtel

Téléphone +41 32 858 15 15

Hardturmstrasse 173, 8005 Zürich

Telefon +41 43 366 65 65

www.bauart.ch



Site plan

bauart