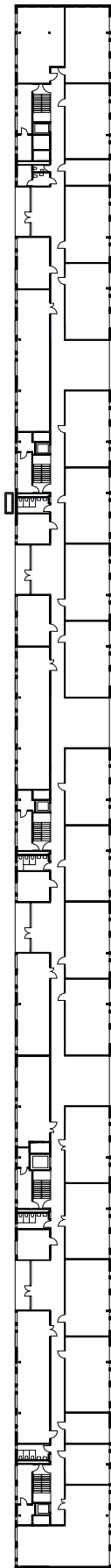


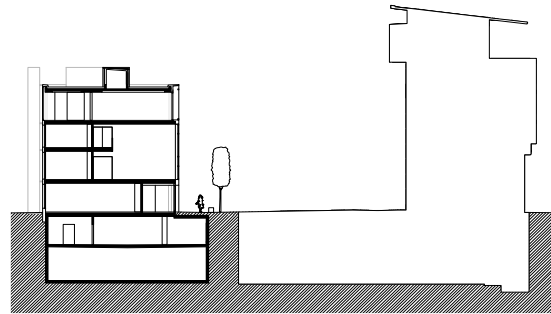
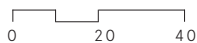


Campus Arc 2 Neuchâtel

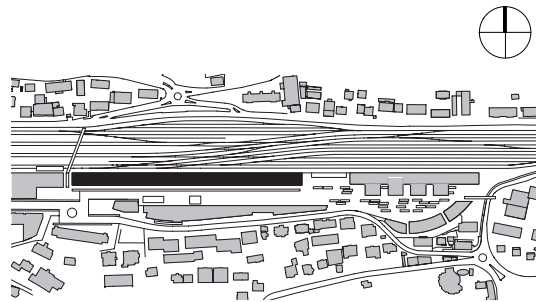
The building gathers all departments of the University of Applied Science Greater Jura Area, which represent 1'500 engineering and health students. The long metallic volume is patterned by several windows which vary in size. It is located along the railway, in close proximity to Neuchâtel train station. The transparency of the last floor enables visual relations with the city heights and offers a panoramic view over the East of Ecoparc neighborhood from the cafeteria.



Level +1



Section on the Campus Arc 2 and the Federal Office of Statistics, main building



Location within the Ecoparc neighbourhood

Campus Arc 2 Neuchâtel

Location

Neuchâtel

Client

SBB Real Estate SA, Lausanne

Projet

2006 - 2008

Realization

2009 - 2011

Costs

CHF 67 Mio

Program

University of Applied Science Greater Jura Area (Directorate-General, engineering and health domains), Convenience shop, Underground parking / P+R

Bauart Architects and Planners Ltd

Frei | Graf | Graf | Jakob | Rey | Ringeisen | Ryter

Laupenstrasse 20, 3008 Bern

Telefon +41 31 385 15 15

Crêt-Taconnet 17, 2002 Neuchâtel

Téléphone +41 32 858 15 15

Hardturmstrasse 173, 8005 Zürich

Telefon +41 43 366 65 65

www.bauart.ch

bauart