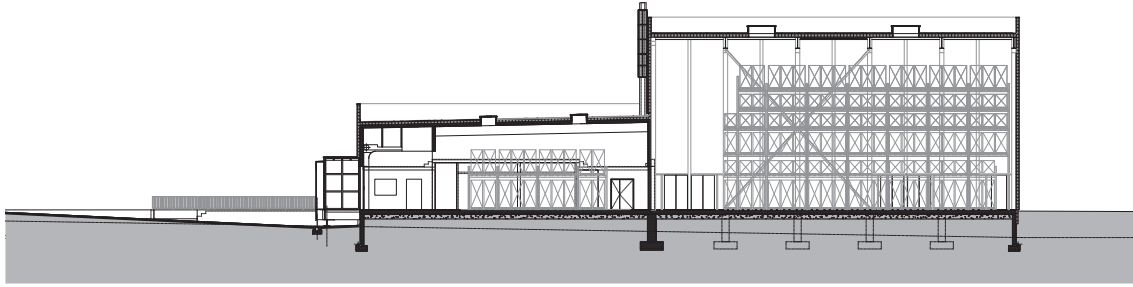


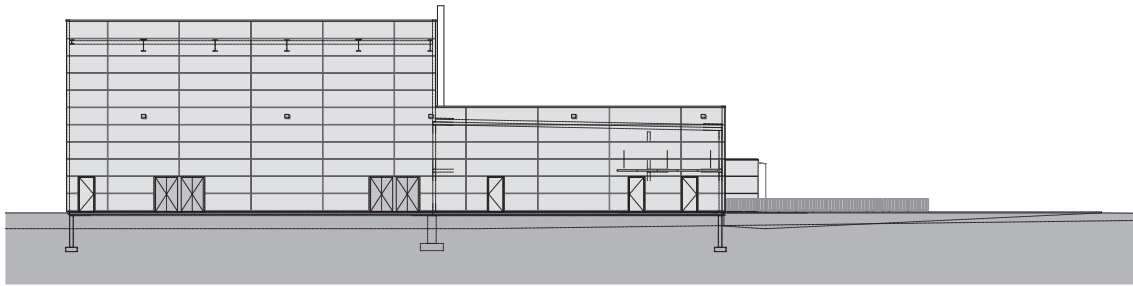


Warehouse Celgene Boudry

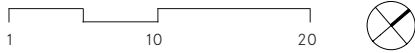
As an integral part of the pharmaceutical company complex, building this warehouse adds impetus to the development plan to create a business activity hub west of the greater Neuchatel area. With its clear geometry, monolithic look and flowing exterior design, the building meets the highest morphological, architectural and logistic standards. Evenly covering each of the four facades, its metal surfacing notably gives a simultaneous impression of unity, rationality and functionality.



Section



South west façade



Warehouse Celgene Boudry

Location

Boudry (NE)

Client

Celgene International Sàrl, Boudry

Work carried out

Project development and completion

Estimate of costs BCC 1-9

CHF 13 Mio

Completion

2012 - 2013

Bauart Architects and Planners Ltd

Frei | Graf | Graf | Jakob | Rey | Ringeisen

Laupenstrasse 20, 3008 Bern

Telefon +41 31 385 15 15

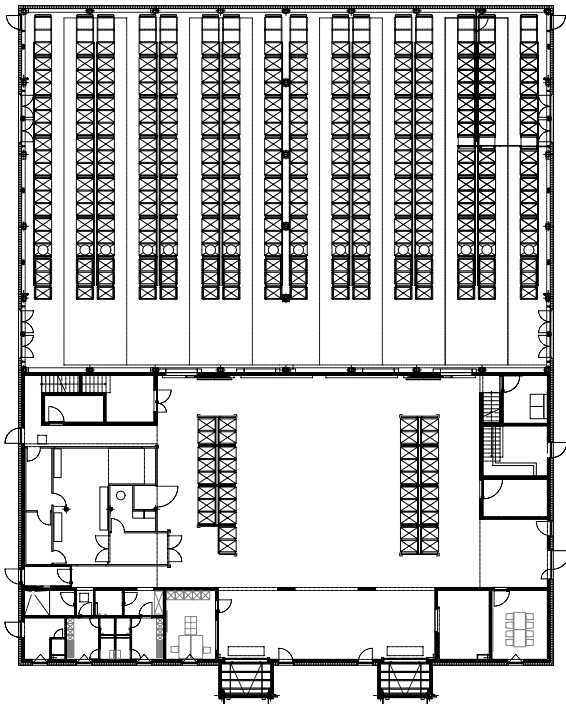
Crêt-Taconnet 17, 2002 Neuchâtel

Téléphone +41 32 858 15 15

Hardturmstrasse 173, 8005 Zürich

Telefon +41 43 366 65 65

www.bauart.ch



Ground floor

bauart