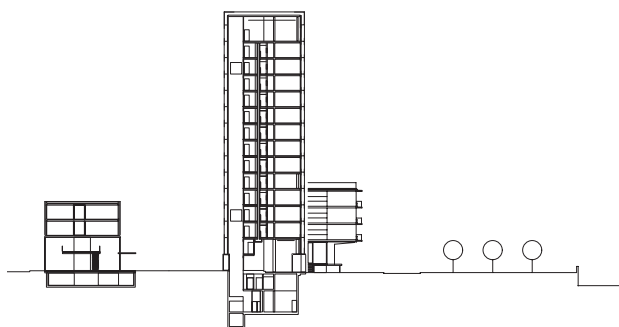
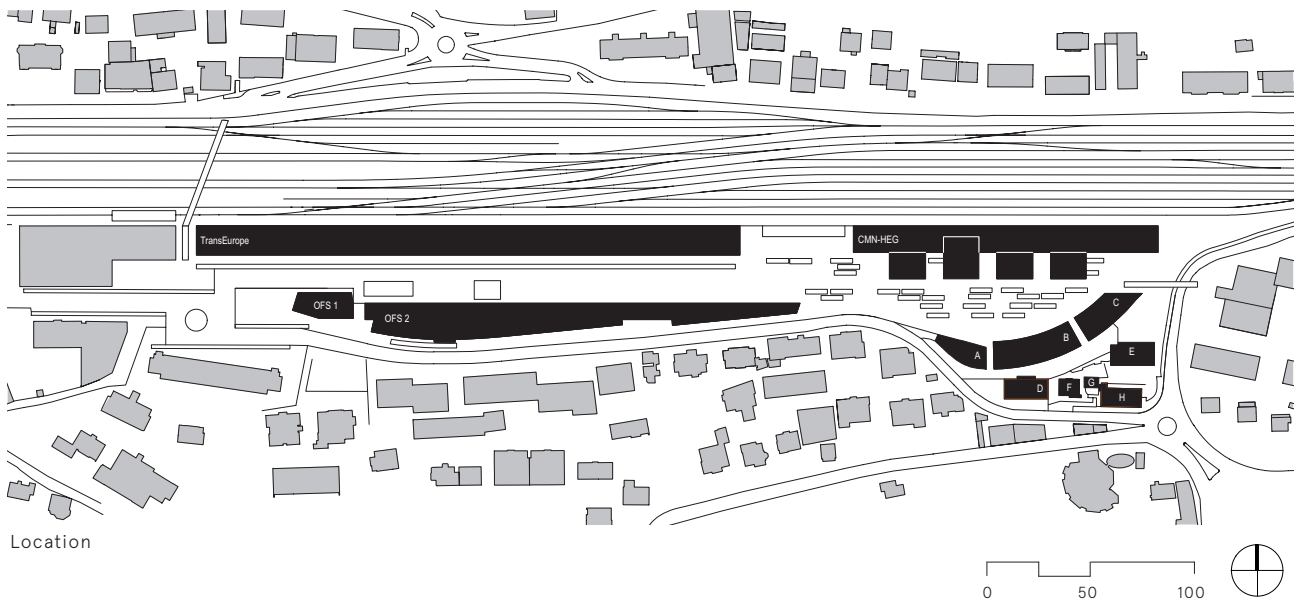


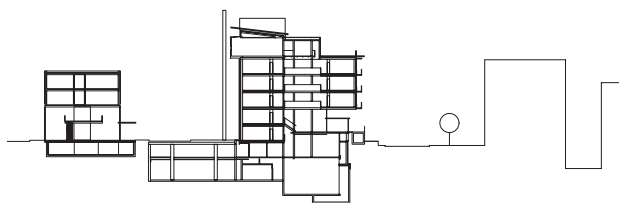


Ecoparc neighborhood Neuchâtel

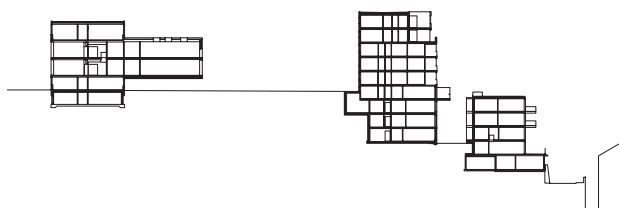
Started from an idea competition dating back to 1990, Ecoparc neighborhood was developed after completion of the Swiss Federal Statistical Office (FOS). An urban brownfield measuring about 4 ha, situated close to Neuchâtel train station was regenerated into a new mixed-used neighborhood, which includes residential and educational spaces as well as offices. The concept, which focuses on the integration of sustainability considerations, includes new constructions and transforming former (craft) industrial areas.



Section on the Campus Arc 2 and the FOS Tower



Section on the Campus Arc 2 and the FOS main building



Section on the Campus Arc 1 and the housing buildings

Ecoparc neighborhood Neuchâtel

Location

Neuchâtel

Program

Regeneration of an urban wasteland

Clients

Swiss Federal Office for Buildings and Logistics, CFF Immobilier, Canton of Neuchâtel, Helvetia, City of Neuchâtel, Bauart Architects and Planners Ltd, private

Realization

FOS 1 | 1994 - 1998

FOS 2 | 2000 - 2004

Housing buildings | 2002 - 2007

Campus Arc 1 | 2004 - 2009

Campus Arc 2 | 2009 - 2011

Passerelle du Millénaire | 2013

Global costs

Approx. CHF 300 Mio

Bauart Architects and Planners Ltd

Frei | Graf | Graf | Jakob | Rey | Ringeisen | Ryter

Laupenstrasse 20, 3008 Bern

Telefon +41 31 385 15 15

Crêt-Taconnet 17, 2002 Neuchâtel

Téléphone +41 32 858 15 15

Hardturmstrasse 173, 8005 Zürich

Telefon +41 43 366 65 65

www.bauart.ch

bauart