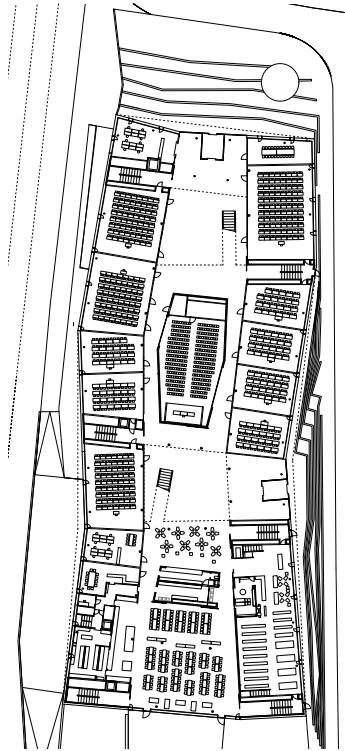


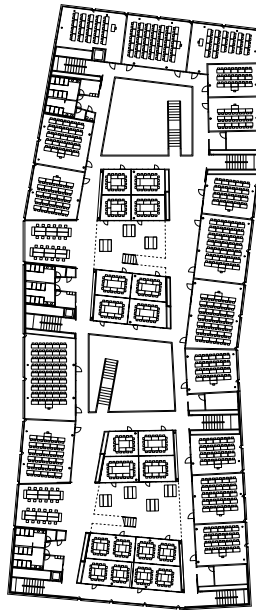


FHNW Olten

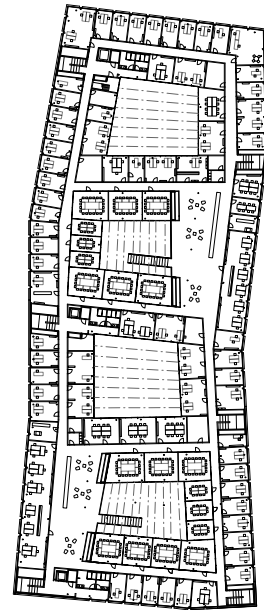
The FHNW Olten hosts 1'200 students from various areas: psychology, social work and economics. The three-story continuous façades are designed with slight bias, which allow continuous transition between the public spaces and the ground floor. The glazed bands are denser on the upper stories to structure more private areas in the upper levels. As a result, the space organization is clearly perceptible in the four indoor atriums. In addition to MINERGIE P ECO standard, the project is exemplary for its rational use of water, its location in close proximity to railway lines and its participative planning process.



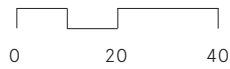
Plan ground floor



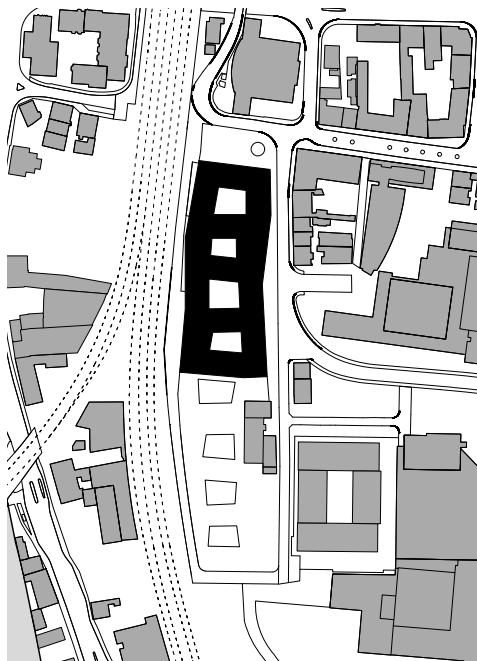
Plan 1st floor



Plan 2nd floor



For light courtyards bring daylight into the building and serve the visitors to the orientation in the building.



Situation

FHNW Olten

Location

Olten

Client

Kanton Solothurn, Bau- und Justizdepartement, Fachhochschule Nordwestschweiz (FHNW)

Procedure

Competition 2007 | 1. Preis

Realization

2009 - 2013

Indicators

Investment costs CHF 97.2 Mio.

Building area 22'000 m²

Bauart Architects and Planners Ltd
Frei | Graf | Graf | Jakob | Rey | Ringisen

Laupenstrasse 20, 3008 Bern
Telefon +41 31 385 15 15
Crêt-Taconnet 17, 2002 Neuchâtel
Téléphone +41 32 858 15 15
Hardturmstrasse 173, 8005 Zürich
Telefon +41 43 366 65 65

www.bauart.ch

bauart