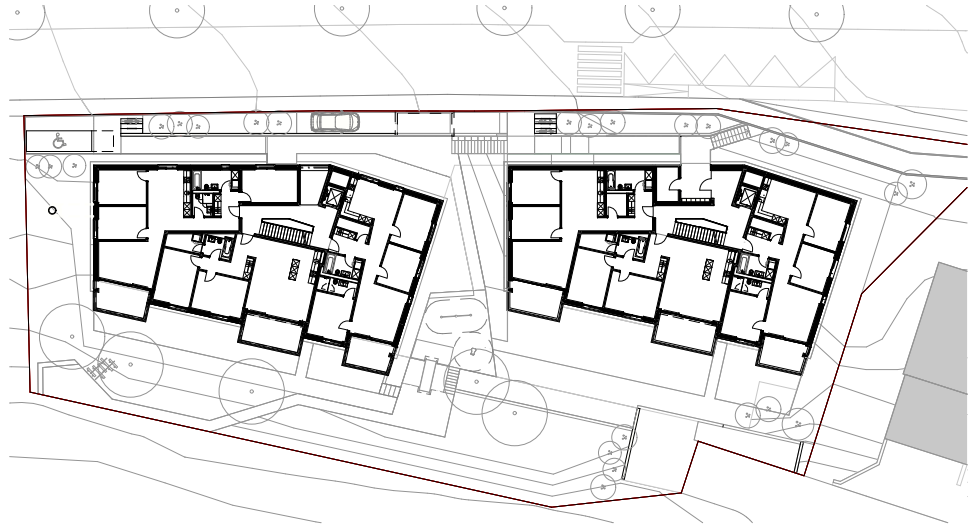


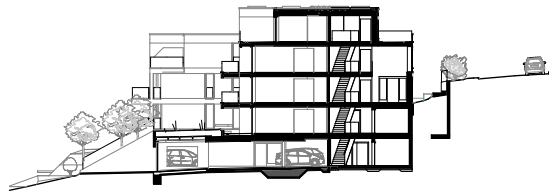


Haldenacher Housing Birmensdorf

The Haldenacher housing construction at Birmensdorf presents two compact and identical volumes fitting subtly to the area's landscape, morphological and topographical contexts. Typologically, the entrances, staircases and kitchens face the road, whereas the larger living spaces are south-, east- and west-facing and enjoy panoramic views out over the countryside.



1st floor plan



Cross section

Haldenacher Housing Birmensdorf

Location

Birmensdorf (ZH)

Client

Cooperative "Milchbuck Zürich bgm"

Type of mandate

Competition 2016 | 1st Preis

Bauart Architects and Planners Ltd
Graf | Graf | Jakob | Rey | Ringeisen

Laupenstrasse 20, 3008 Bern
Telefon +41 31 385 15 15
Crêt-Taconnet 17, 2002 Neuchâtel
Téléphone +41 32 858 15 15
Zimmerlistrasse 6, 8004 Zürich
Telefon +41 43 366 65 65

www.bauart.ch



Site plan

bauart