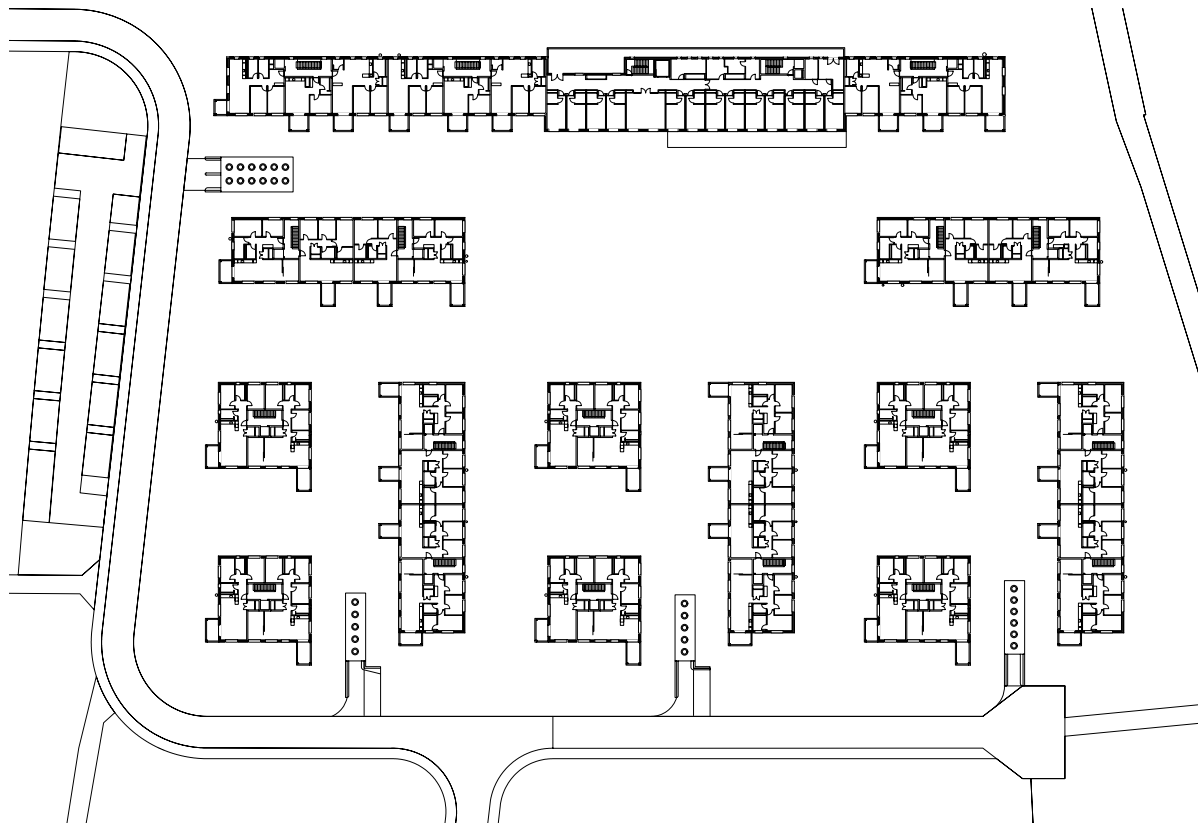


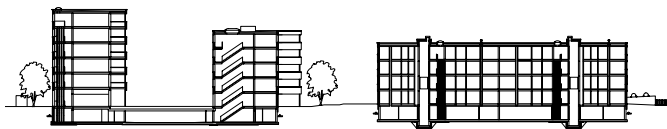


## Im Vieri Schwerzenbach

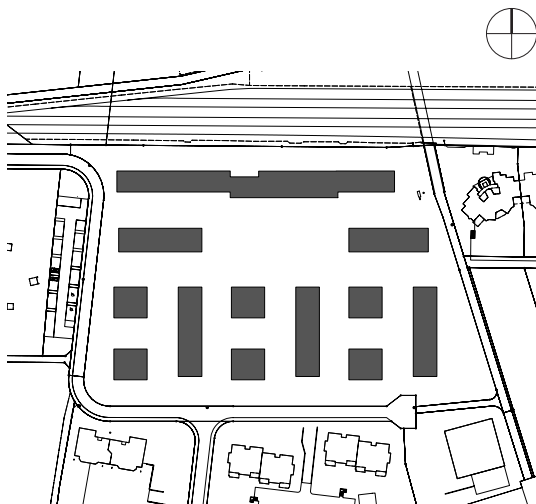
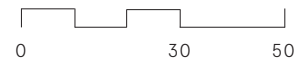
Four different generations share the same living spaces of the neighborhood. Children, young adults, families and persons with reduced mobility live in harmony within the same entity. The project includes 188 apartments, from 2,5 to 5,5 rooms, 52 care units, a nursery and a cafeteria on a 28'000 m<sup>2</sup> plot. The setting of the various buildings creates a pedestrian square in the center of the site, which hosts the public cafeteria. The new neighborhood is ideally situated in close proximity to the station, shops and schools.



Plan 1. Floor



Section



Site plan

## Im Vieri Schwerzenbach

### Location

Schwerzenbach (ZH)

### Client

Service Insurance Fund of the Canton Zurich (BVK)

### Programm

Apartments for renting, Nursery, Care units,  
Public cafeteria

### Procedure

Competition 2003/2004 | 1st prize

### Realization

2010 - 2012

### Costs BCC 1-9

CHF 90 Mio

In collaboration with OZ Architects Amsterdam

Bauart Architects and Planners Ltd  
Frei | Graf | Graf | Jakob | Rey | Ringelsen

Laupenstrasse 20, 3008 Bern  
Telefon +41 31 385 15 15  
Crêt-Taconnet 17, 2002 Neuchâtel  
Téléphone +41 32 858 15 15  
Hardturmstrasse 173, 8005 Zürich  
Telefon +41 43 366 65 65

[www.bauart.ch](http://www.bauart.ch)

**bauart**