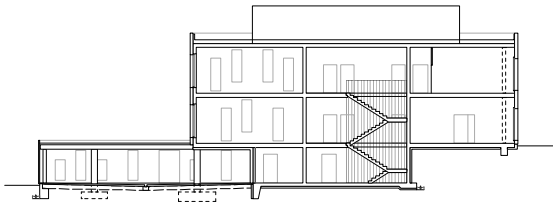
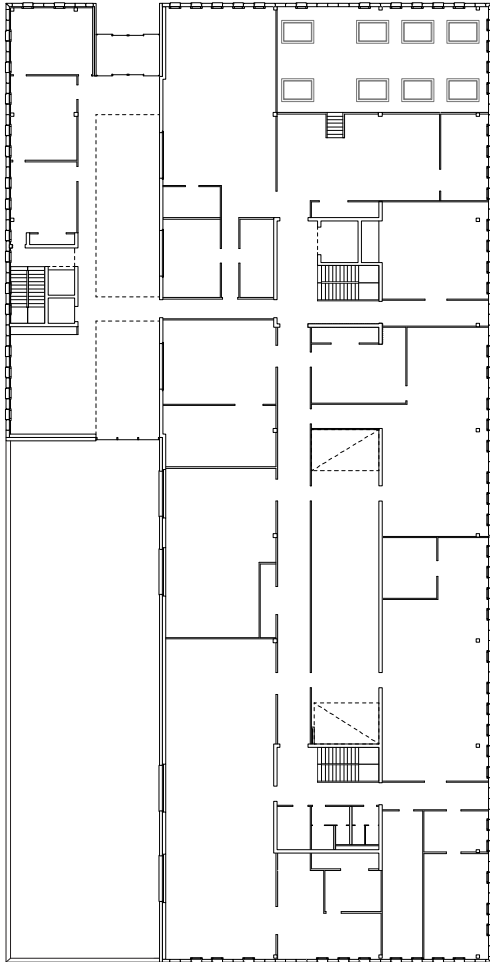


Manufacture Fehr + Cie SA and Technofrap SA

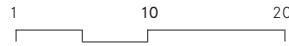
Conceived as a unitary piece integrated in the ground, the building enters into dialogue with its surroundings and reacts to the slope with a precise positioning of the various entrance levels. The centralization of the production in a single location is a strategic choice in the company's history. The interior organization reflects this strategy: the central space brings together production, reception and administration functions. This double-height volume structures movements within the building and becomes its main referencing space. It brings natural light into the core of the building and serves simultaneously as reception area, show room and meeting place.



Cross-section



Ground floor



Manufacture Fehr + Cie SA and Technofrap SA

Location

La Chaux-de-Fonds

Client

NewArt Solutions SA

General contractor

Losinger Marazzi, Bussigny

Procedure

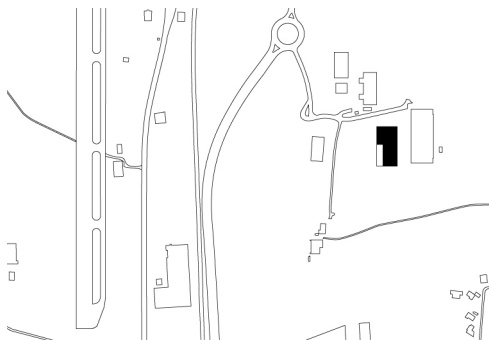
Directe mandate

Costs

Approx. CHF 15 Mio

Realization

2013 - 2014



Location

Bauart Architects and Planners Ltd

Frei | Graf | Graf | Jakob | Rey | Ringeisen | Ryter

Laupenstrasse 20, 3008 Bern

Telefon +41 31 385 15 15

Crêt-Taconnet 17, 2002 Neuchâtel

Téléphone +41 32 858 15 15

Hardturmstrasse 173, 8005 Zürich

Telefon +41 43 366 65 65

www.bauart.ch

bauart