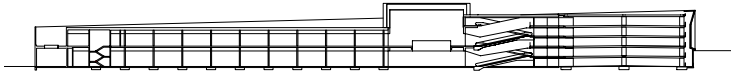


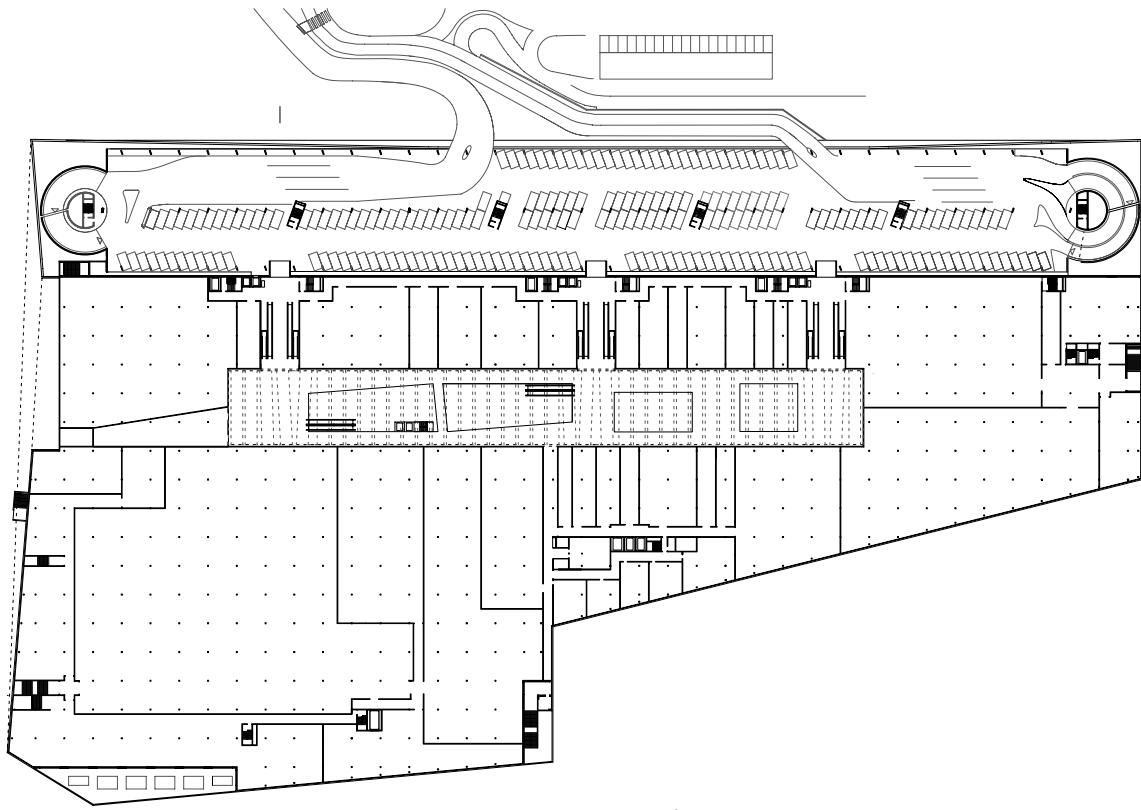


## Marin Centre La Tène

The realization of the new Marin Centre was planned in stages in order to replace the existing center without interrupting commercial activities. From the motorway located in the north, a direct access leads to the five-storeys parking. From there, ramps guide to the main space, a central hall flooded with natural light penetrating through the glazed roof. At the west end, a terrace opens out to the natural landscape and the pedestrian walkway linking the Centre to the village of Marin. The station situated south of the Centre enables direct access by public transport.



0 25 50 100



## Marin Centre La Tène

### Location

La Tène (NE)

### Client

Marin Centre SA

### Procedure

Competition 2005 | 1st prize

### Costs BCC 1-9

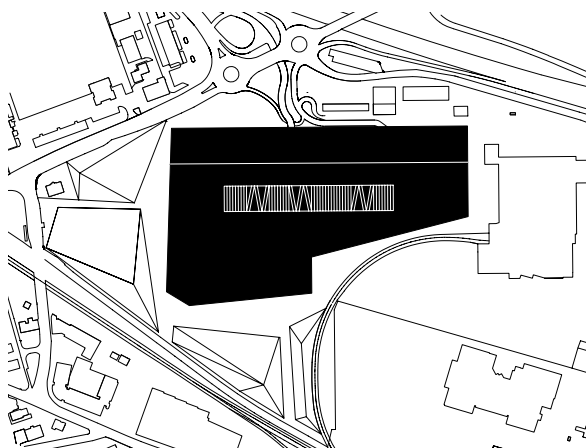
CHF 178 Mio

### Costs/m<sup>3</sup> BCC 2

CHF 197.-/m<sup>3</sup>

### Realization

2007 - 2011



Bauart Architects and Planners Ltd

Frei | Graf | Graf | Jakob | Rey | Ringelsen | Ryter

Laupenstrasse 20, 3008 Bern

Telefon +41 31 385 15 15

Crêt-Taconnet 17, 2002 Neuchâtel

Téléphone +41 32 858 15 15

Hardturmstrasse 173, 8005 Zürich

Telefon +41 43 366 65 65

[www.bauart.ch](http://www.bauart.ch)

**bauart**