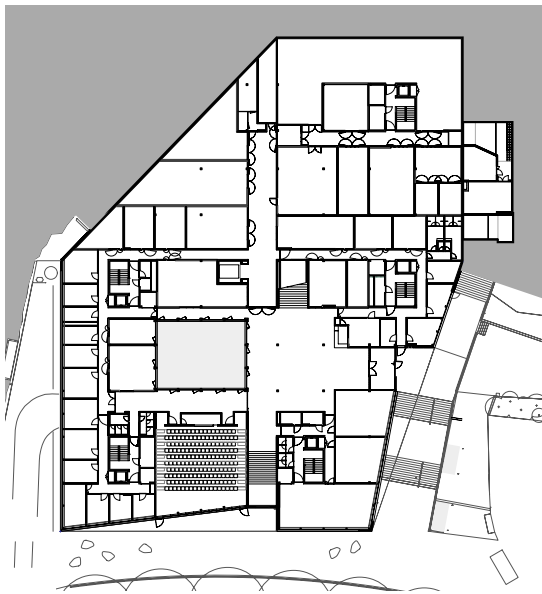


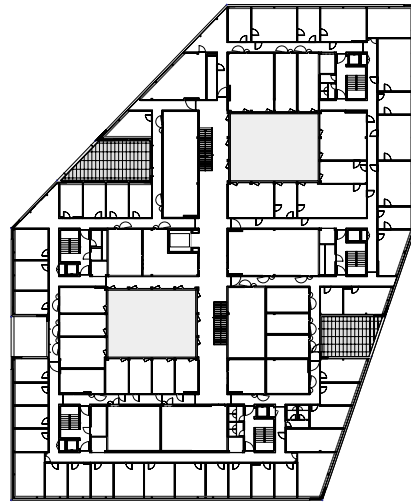


## Microcity Neuchâtel

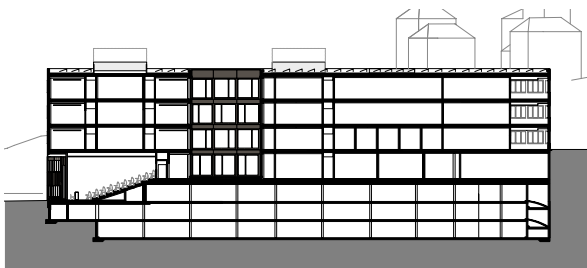
Designed as a unitary urban entity, Microcity building creates a new centrality in the urban fabric of Neuchâtel. It enters into dialogue with its neighbors and reacts plastically to the specificities of its immediate context. The staged topography of the site, combined with the compacity of the proposed building and the creation of three specific exterior spaces, supports a tailored morphological dialogue for the site. A new public park forges privileged links with the surrounding neighborhood and acts as representative space in the new campus.



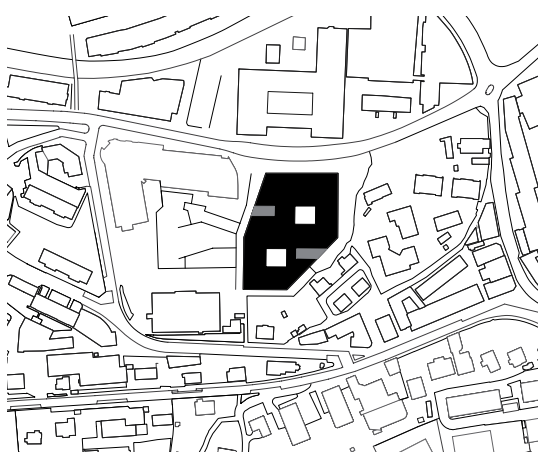
1st Floor



3rd Floor



Section on the Auditorium



## Microcity Neuchâtel

### Location

Neuchâtel

### Client

Canton of Neuchâtel, represented by the Department of Education, Culture and Sports (DECS)

### Users

Ecole polytechnique fédérale de Lausanne (EPFL)  
Institut de microtechnique (IMT)  
Neode, Parc scientifique et  
technologique Neuchâtel

### Procedure

Competition with general contractor 2009 | 1st prize

### General contractor

ERNE Holzau AG, Laufenburg

### Costs

CHF 71.4 Mio

### Realization

2010 - 2013

Bauart Architects and Planners Ltd

Frei | Graf | Graf | Jakob | Rey | Ringeisen | Ryter

Laupenstrasse 20, 3008 Bern

Telefon +41 31 385 15 15

Crêt-Taconnet 17, 2002 Neuchâtel

Téléphone +41 32 858 15 15

Hardturmstrasse 173, 8005 Zürich

Telefon +41 43 366 65 65

[www.bauart.ch](http://www.bauart.ch)

**bauart**