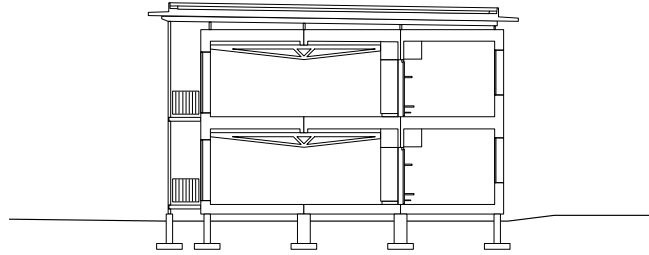
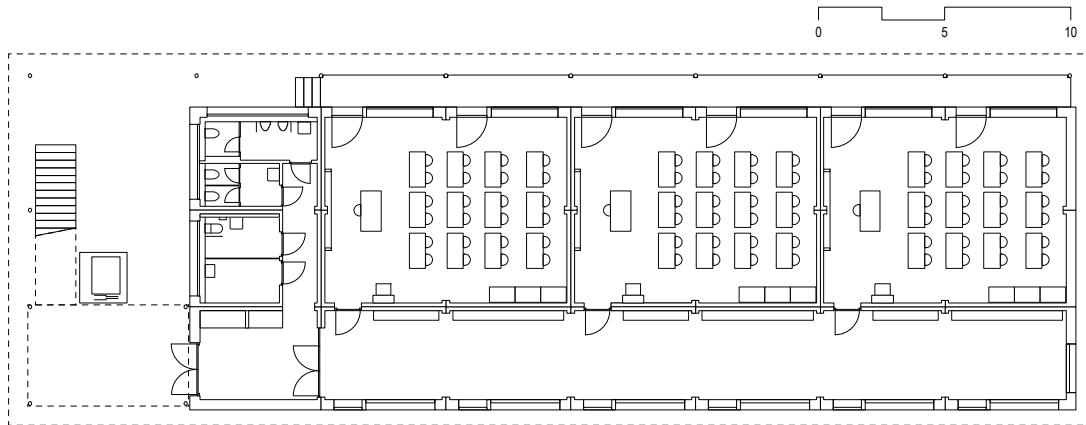




Modular - Niederwangen The urgently required expansion of the school was built next to the modular construction of the first generation. The covered entrance zone is also used as extended recreation area. A handicapped accessible lift is associated to the staircase. The classrooms are accessed via generous corridors. On the southern side of the classrooms, the front zone of the balcony with exterior sun protection runs over the total length of the building. The modular expansion fulfills all requirements of the Minergie-ECO standard, including controlled ventilation. The entire installation is fitted with LED lights. The sustainable and ecologic wooden construction is highly appreciated by children and teachers.



SECTION



PLAN

Modular - Niederwangen

Client

Commune of Köniz / Department of municipal buildings

Type of procedure

Follo order to module 1

Costs BCC 1-9

CHF 4'400'000

Costs BCC 2

CHF 476/m³

FA / NFA

844 m² / 736 m²

Execution

09.2012 - 01.2013 Module construction

10.2012 - 01.2013 Preparation

01.2013 - 06.2013 Module and completion

Bauart Architects and Planners Ltd

Frei | Graf | Graf | Jakob | Rey | Ringeisen | Ryter

Laupenstrasse 20, 3008 Bern

T 031 385 15 15

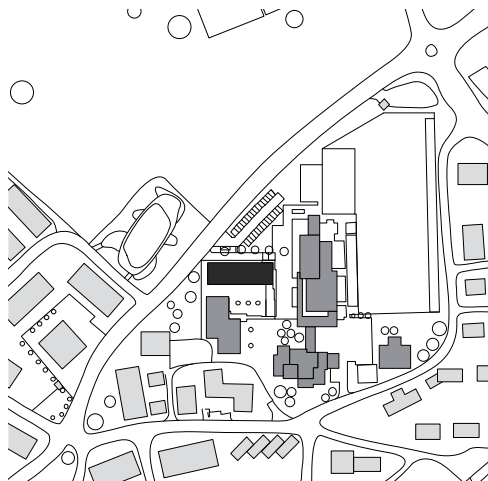
Crêt-Taconnet 17, 2002 Neuchâtel

T 032 858 15 15

Hardturmstrasse 173, 8005 Zürich

T 043 366 65 65

www.bauart.ch



LOCATION