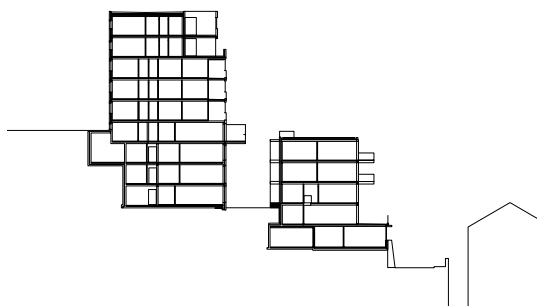




## Residential complexes in the Ecoparc neighbourhood Neuchâtel

Several residential buildings are well-established as an integral part of the Ecoparc project in the "Crêt-Taconnet Est" area. Inspired by the history of the site, their volume follows the curved geometry of the plateau, thus helping the new district to fit in with the surrounding urban fabric. Special attention has been paid to sustainable development criteria which has led to winning the Minergie seal of approval and great typological diversity that promotes a mix of age groups.



## Residential complexes in the Ecoparc neighbourhood Neuchâtel

### Location

Neuchâtel

### Client

Helvetia Assurances, Bâle

### Project

2000 - 2001

### Completion

2002 - 2004 (stage 1)

2005 - 2007 (stage 2)

### Overall cost

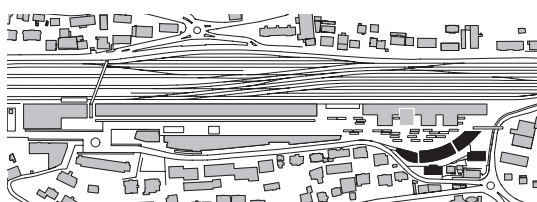
CHF 22 Mio (stage 1)

CHF 16 Mio (stage 2)

### Program

Stage 1: 9 lofts in floor-by-floor ownership, 48 flats (ranging from studios to 5.5-room apartments) and 2 offices for rent

Stage 2: 7 lofts, 33 flats (ranging from studios to 4.4-room apartments) for rent



Site plan

Bauart Architects and Planners Ltd

Frei | Graf | Graf | Jakob | Rey | Ringeisen | Ryter

Laupenstrasse 20, 3008 Bern

Telefon +41 31 385 15 15

Crêt-Taconnet 17, 2002 Neuchâtel

Téléphone +41 32 858 15 15

Hardturmstrasse 173, 8005 Zürich

Telefon +41 43 366 65 65

[www.bauart.ch](http://www.bauart.ch)

**bauart**