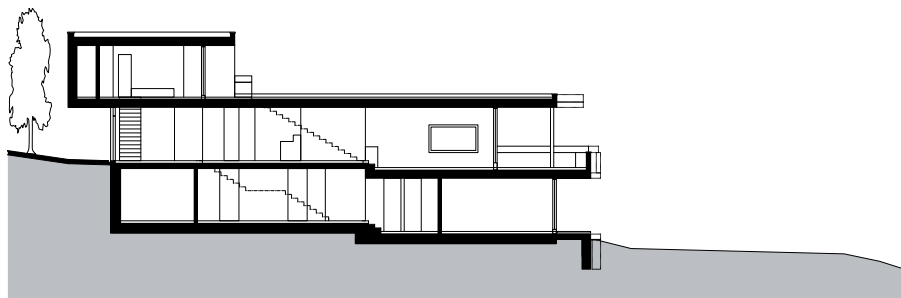
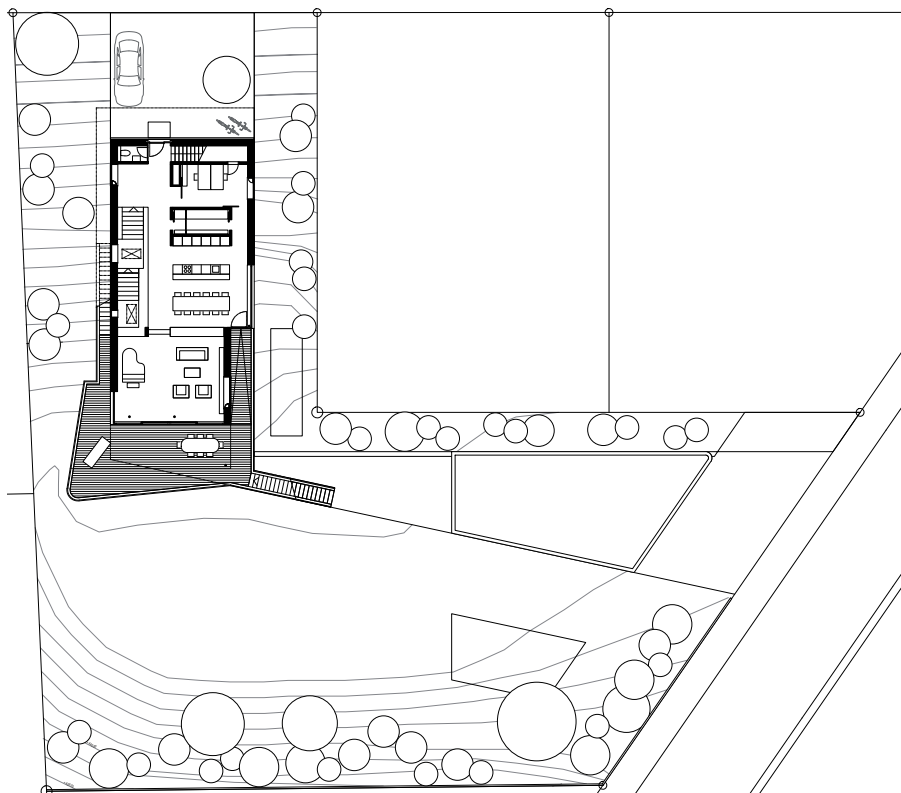




**S+K House, Bülach** The white color, terrace and cube shape lend the building a strong and compact identity, which perfectly matches the surrounding context. The roof overhang for cars is also integrated in the volume in order to foster a feeling of unity. The generous space of the residential floor, as well as the vast distribution areas leading to the parents' and then the children's floor, provide leisure areas to the inhabitants in addition to their specific functions. The large staircase serves both as a library and as a game area for the children.



SECTION



PLAN GROUND FLOOR

SITUATION



### **S+K House, Bülach**

*Builder*  
E. Schertler Kaufmann /  
Dr. M. Kaufmann

*Procedure*  
Direct mandate

*Costs BCC 1-9*  
1.83 Mio CHF

*Realization*  
03.2008 - 01.2009

Bauart Architects and Planners Ltd  
Frei | Graf | Graf | Jakob | Rey | Ringeisen | Ryter

Laupenstrasse 20, 3008 Bern  
T 031 385 15 15  
Crêt-Taconnet 17, 2002 Neuchâtel  
T 032 858 15 15  
Hardturmstrasse 173, 8005 Zürich  
T 043 366 65 65

[www.bauart.ch](http://www.bauart.ch)