

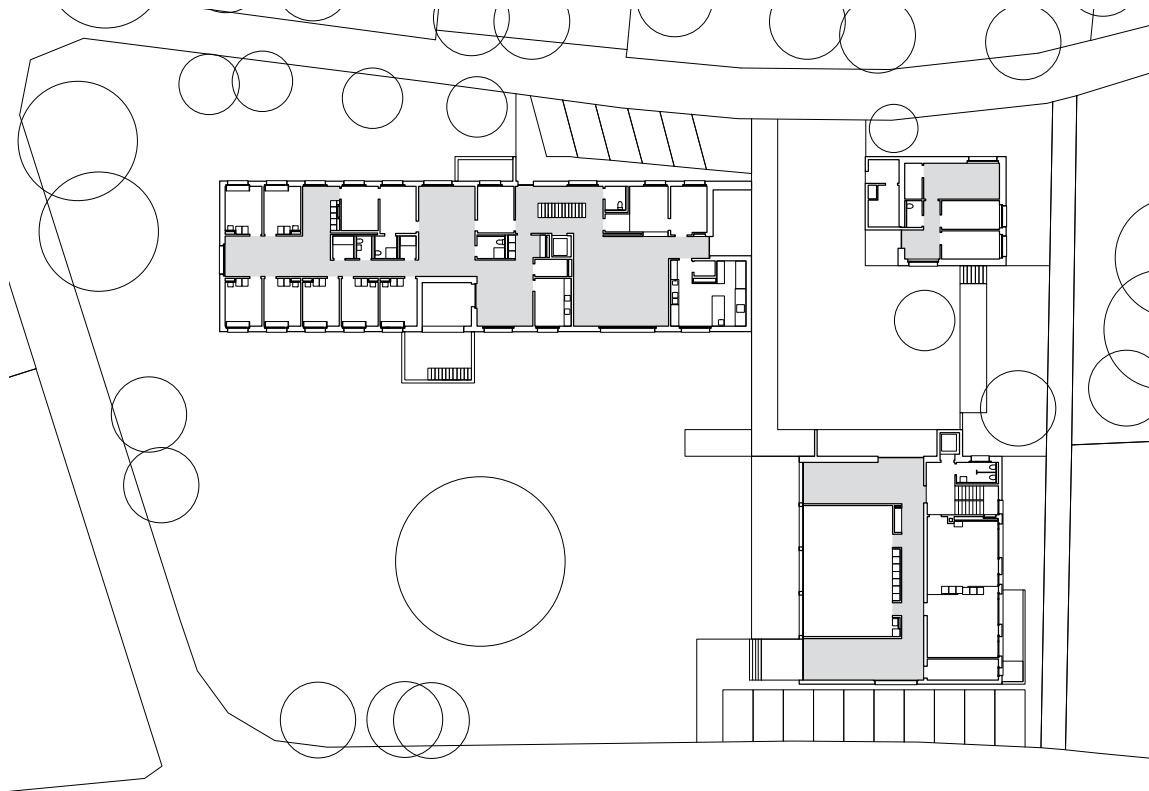


**School and residential complex Sonnegg** The new school and residential complex Sonnegg comprises three buildings connected by a square. Two new buildings with Minergie-P-ECO standard host the housing groups and the administration. The existing school building, which retains its original function, was transformed. The buildings, erected on the plot boundaries, maintain the splendid existing park and its ancient trees. The space is thus organized by this public to private hierarchy, from the park and the square to the community and individual rooms of the housing groups.

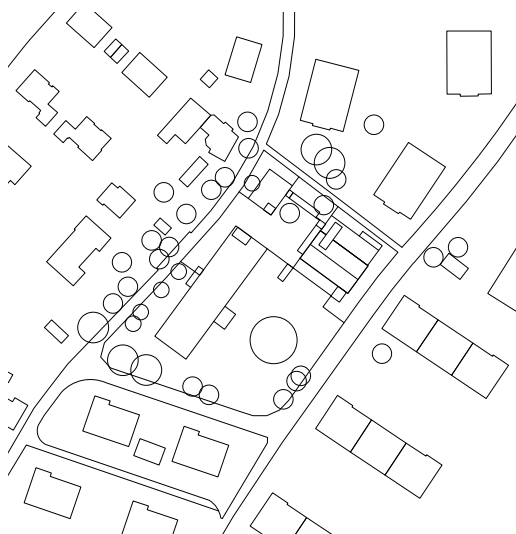
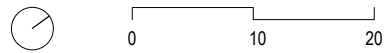


SECTION

ELEVATION



GROUND FLOOR



LOCATION

### School and residential complex Sonnegg

*Client*  
 Sonnegg Association  
*Costs BCC 1-9*  
 CHF 10.4 Mio  
*Realization*  
 2011 - 2013

Bauart Architects and Planners Ltd  
 Frei | Graf | Graf | Jakob | Rey | Ringeisen | Ryter

Laupenstrasse 20, 3008 Bern  
 T 031 385 15 15  
 Crêt-Taconnet 17, 2002 Neuchâtel  
 T 032 858 15 15  
 Hardturmstrasse 173, 8005 Zürich  
 T 043 366 65 65

[www.bauart.ch](http://www.bauart.ch)