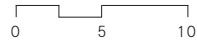
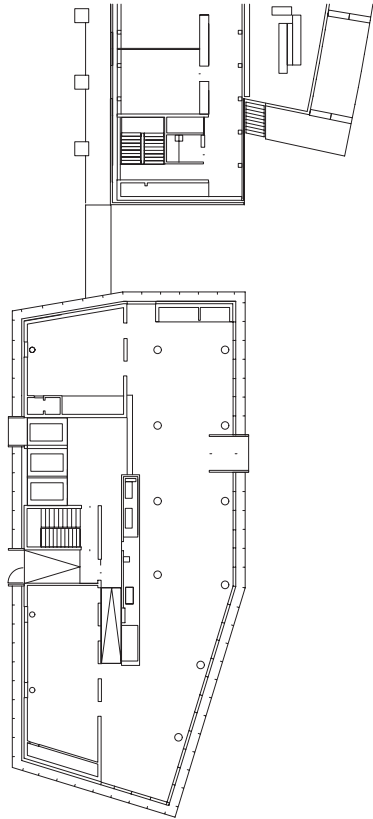




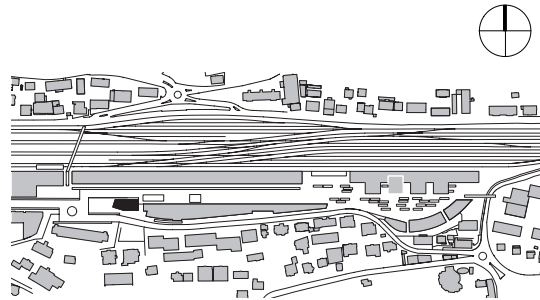
## Swiss Federal Statistical Office Tower Neuchâtel

The Swiss Federal Statistical Office tower is conceived both as an extension of the main building and as an urban landmark. The glass prism is a distinguishing feature of the rail station area. According to luminosity, its glazed outer envelope gives it a transparent, opaque or reflecting appearance. The approach integrates various sustainable development considerations. They are noticeable in the implementation of the double-skin façade and in the integrated approach of energy and comfort.

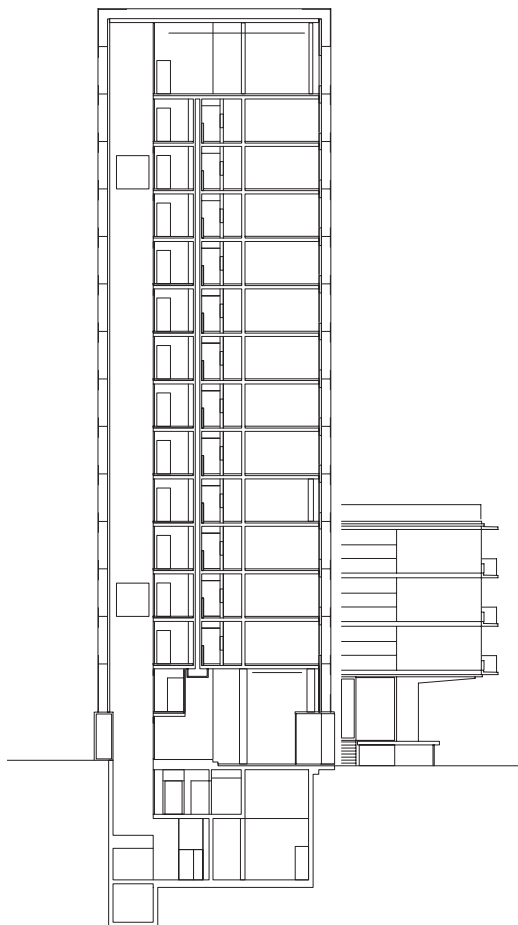


Plan ground floor | The ground floor presents a cultural and public character

Section | The two-storey penthouse is used for representative purposes



Site plan



## Swiss Federal Statistical Office Tower Neuchâtel

### Location

Neuchâtel

### Client

Swiss Federal Office for Building and Logistics SFBL

### Beginning of the project

Competition 1990

### Cost estimate BCC 1-9

CHF 30 Mio

### Cost/m<sup>3</sup> BCC 2

CHF 980.-

### Realization

2000 - 2004

Bauart Architects and Planners Ltd

Frei | Graf | Graf | Jakob | Rey | Ringeisen | Ryter

Laupenstrasse 20, 3008 Bern

Telefon +41 31 385 15 15

Crêt-Taconnet 17, 2002 Neuchâtel

Téléphone +41 32 858 15 15

Hardturmstrasse 173, 8005 Zürich

Telefon +41 43 366 65 65

[www.bauart.ch](http://www.bauart.ch)

**bauart**