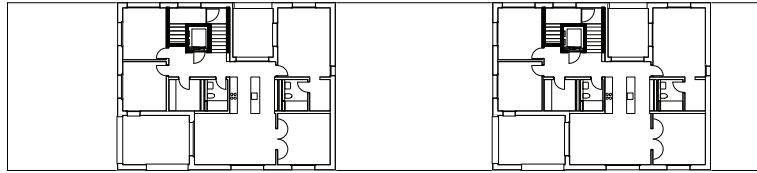




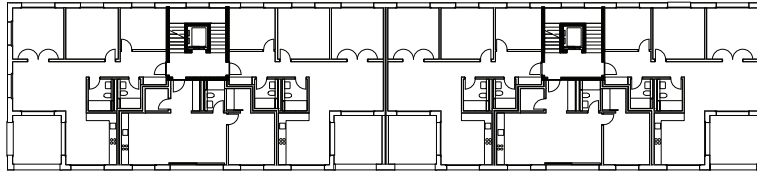
## swisswoodhouse Nebikon

Swisswoodhouse was developed as a wooden apartment building system, flexible and compatible with the 2000 Watts society requirements. The first swisswoodhouse building, comprising 18 apartments, was constructed in Nebikon, on a small peninsula between two streams. With their differentiated typologies, the apartments - ranging from 2.5 to 5.5 room flats - reflect the multiple possibilities of the swisswoodhouse system. A slightly iridescent dark grey vertical wood paneling is laid in the opposite direction to that of the 60 m long building. The whole wooden construction, including the façade, is prefabricated and assembled in only 3 weeks.

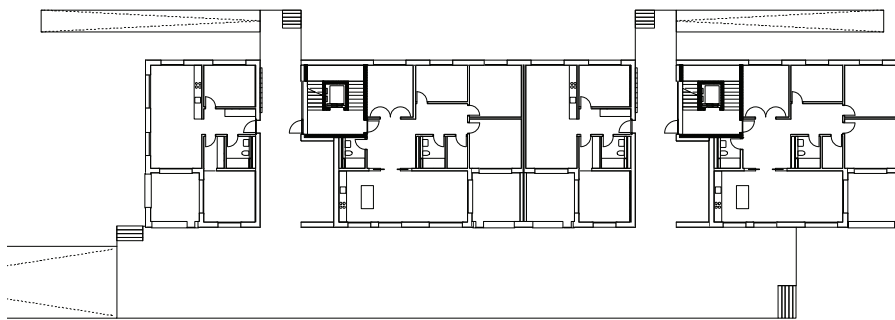




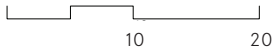
Plan attic



Plan 1st and 2nd floor



Plan ground floor



## swisswoodhouse Nebikon

### Location

Nebikon

### Client

Personalvorsorgestiftung Müller Martini Zofingen

### Program

18 rental apartments, from 2.5 to 5.5 rooms

### Wooden construction

Renggli AG Sursee

### Realization

2013 - 2014

Bauart Architects and Planners Ltd

Frei | Graf | Graf | Jakob | Rey | Ringeisen

Laupenstrasse 20, 3008 Bern

Telefon +41 31 385 15 15

Crêt-Taconnet 17, 2002 Neuchâtel

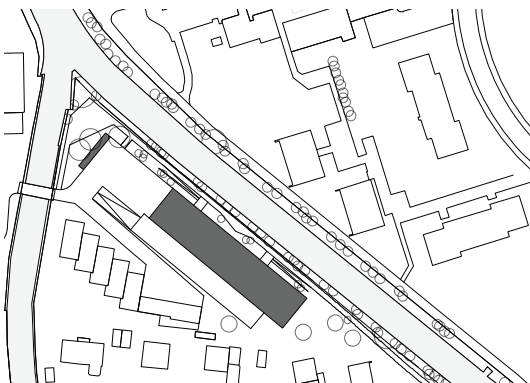
Téléphone +41 32 858 15 15

Zimmerlistrasse 6, 8004 Zürich

Telefon +41 43 366 65 65

[www.bauart.ch](http://www.bauart.ch)

[www.modulart.ch](http://www.modulart.ch)



Situation

