

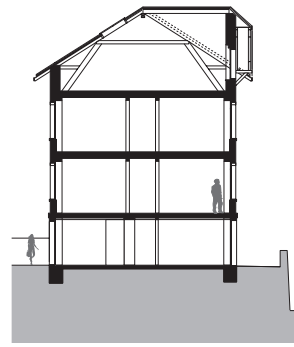


Transformation of a former factory Neuchâtel

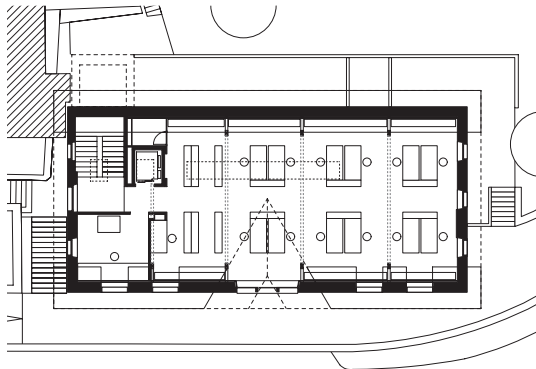
The former boxing factory, built in 1900, is part of Ecoparc neighborhood. It has been entirely renovated in order to offer working areas with exceptional spatial qualities (room height of 3 meters, in particular). Façade roughcast was entirely refurbished. Hence, after more than fifteen years in a temporary building, Bauart Neuchâtel office installs its new premises on floors 2 and 3. The first floor is occupied by a medical office.



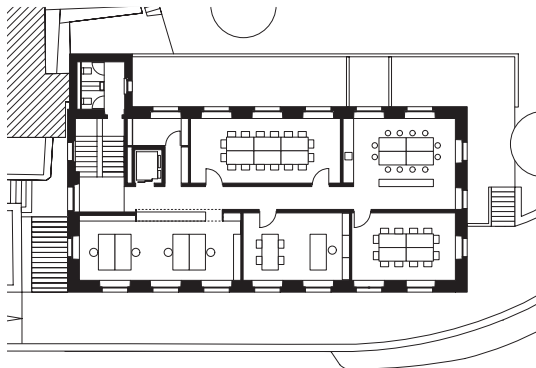
South façade



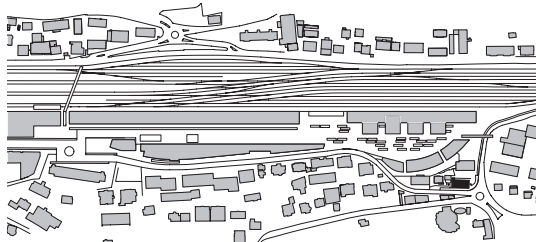
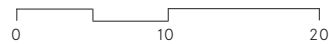
Cross-section



Floor plan +3



Floor plan +2



Site plan

Transformation of a former factory Neuchâtel

Location

Neuchâtel

Client

Bauart Architects and Planners Ltd

Realization

2007 - 2008

Global cost

CHF 2.5 Mio

Program

Architecture and medical premises

Bauart Architects and Planners Ltd

Frei | Graf | Graf | Jakob | Rey | Ringeisen | Ryter

Laupenstrasse 20, 3008 Bern

Telefon +41 31 385 15 15

Crêt-Taconnet 17, 2002 Neuchâtel

Téléphone +41 32 858 15 15

Hardturmstrasse 173, 8005 Zürich

Telefon +41 43 366 65 65

www.bauart.ch

bauart