

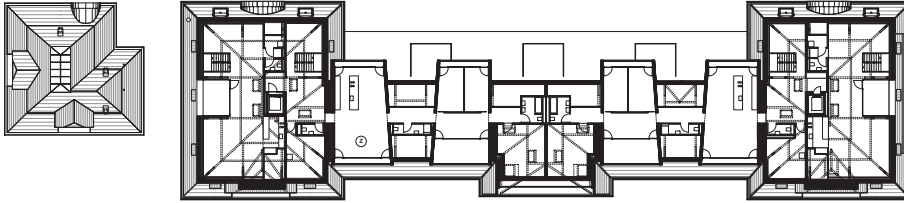


Transformation of the former Cadolles Hospital Neuchâtel

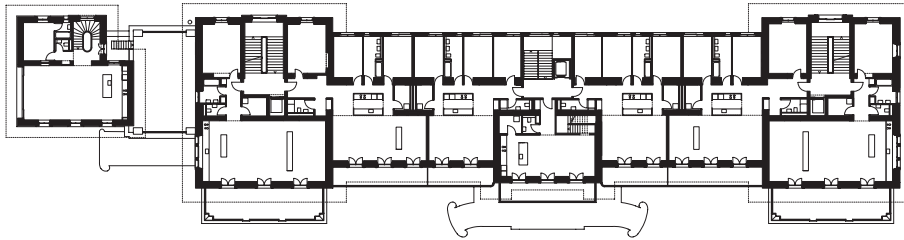
The project aims at valorizing the essential characteristics of the southern building and the lodge, main elements of the hospital complex put into service as early as 1914 on Cadolles site. The major space of the project is located in the building's southern half. This spacious volume with high ceiling enjoys favorable solar orientation and remarkable views over the lake of Neuchâtel and the Alps. On the roof, magnificent apartments with exceptional view are housed in four transversal volumes.



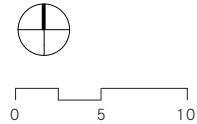
South façade



Plan level +4



Plan level +2



Transformation of the former Cadolles Hospital Neuchâtel

Location

Neuchâtel

Client

Bauart Architects and Planners Ltd

Project

2005 - 2007

Program

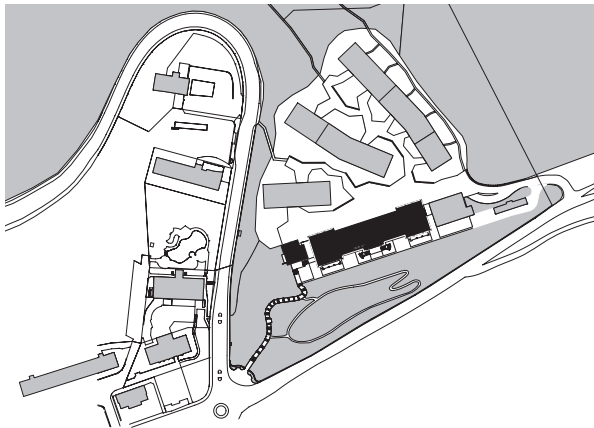
24 owner-occupied apartments + 4 workshops

Costs BCC 0-9

CHF 20 Mio

Realization

2008 - 2010



Site plan

Bauart Architects and Planners Ltd

Frei | Graf | Graf | Jakob | Rey | Ringeisen | Ryter

Laupenstrasse 20, 3008 Bern

Telefon +41 31 385 15 15

Crêt-Taconnet 17, 2002 Neuchâtel

Téléphone +41 32 858 15 15

Hardturmstrasse 173, 8005 Zürich

Telefon +41 43 366 65 65

www.bauart.ch

bauart