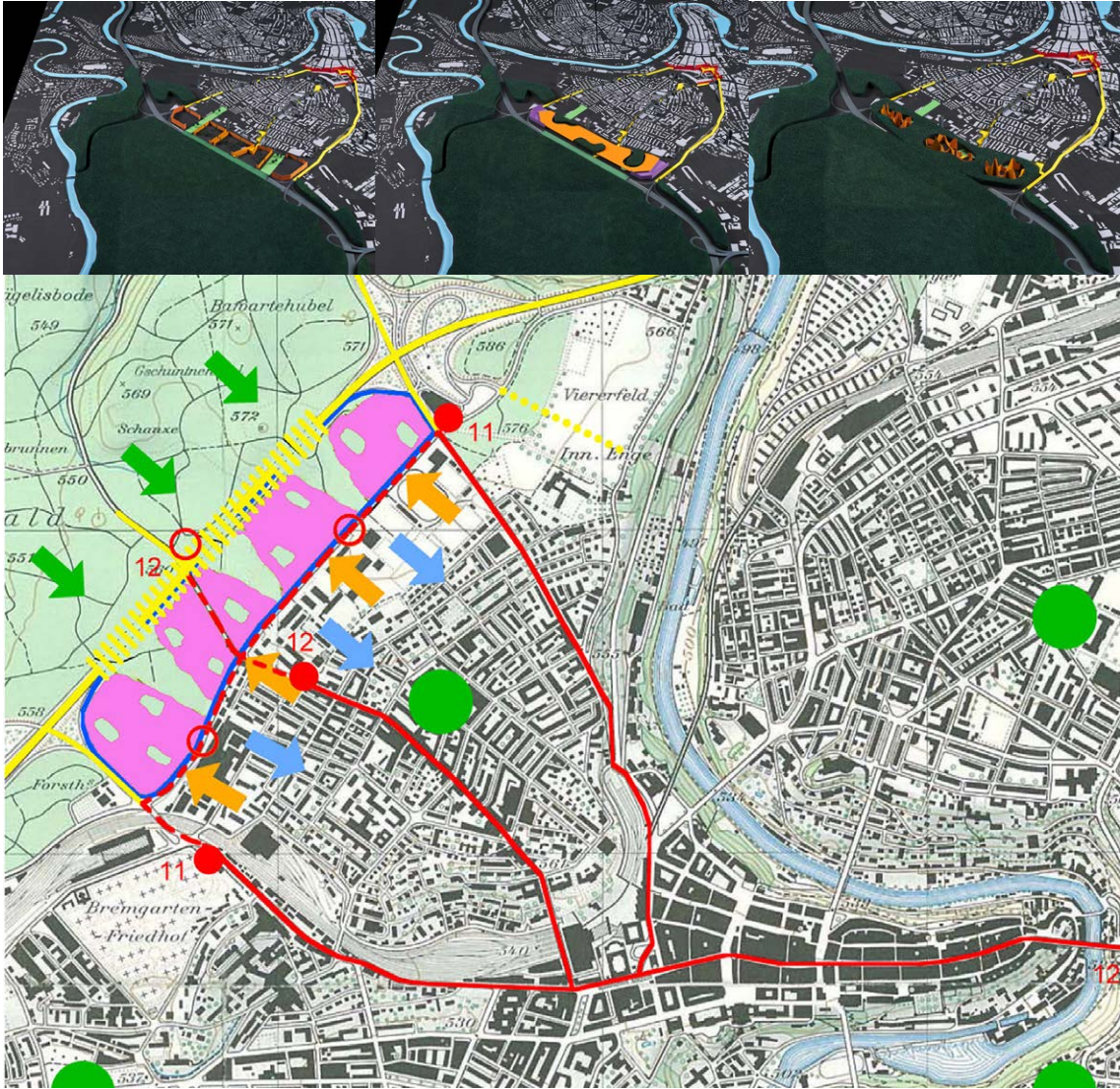












Waldstadt Bremer Bern

The Waldstadt Bremer project calls into question the phenomenon of urban sprawl. It foresees the creation of new housings for six to eight thousand inhabitants on the northern boundary of the city of Bern. The idea involves extending the traditional Länggasse neighborhood by urbanizing a residual forested strip, which is totally cut off from Bremgarten forest since the construction of A1 motorway in the seventies. The project includes both the development of a new type of urban fabric and the covering of the motorway.



Possible interpretations of the development of the city

Legends

-  Plot size 43 ha
-  Use the infrastructure
-  Cover the highway A1
-  Live near the city center
-  Extension of the transport
-  Valuing the Länggasse neighbourhood
-  Creation of an ecological compensation
- 

Waldstadt Bremer Bern

Location
 Bern
Procedure
 Project initiated by Bauart
Planning costs
 CHF 1.0 Mio
Planning
 2004 -

Bauart Architects and Planners Ltd
 Frei | Graf | Graf | Jakob | Rey | Ringeisen | Ryter

Laupenstrasse 20, 3008 Bern
 Telefon +41 31 385 15 15
 Crêt-Taconnet 17, 2002 Neuchâtel
 Téléphone +41 32 858 15 15
 Hardturmstrasse 173, 8005 Zürich
 Telefon +41 43 366 65 65

www.bauart.ch

