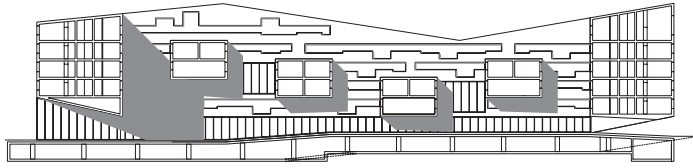
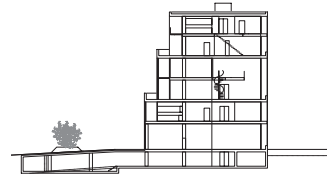




Competition for the Zug Schleife area The differentiated plot layouts lead to two distinct urban-planning concepts: a single building in the northern sector (Living Club) and a longitudinal building in the southern sector (Show Case). The landscaping is designed accordingly. Cherry trees connect the two living spaces. The surroundings of the Living Club merge into the building, while a wide ramp leads into the inside.



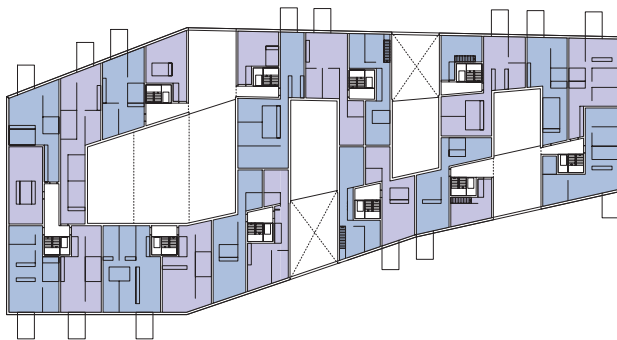
SECTION LIVING CLUB



CROSS SECTION SHOW CASE



PLAN 1ST FLOOR LIVING CLUB



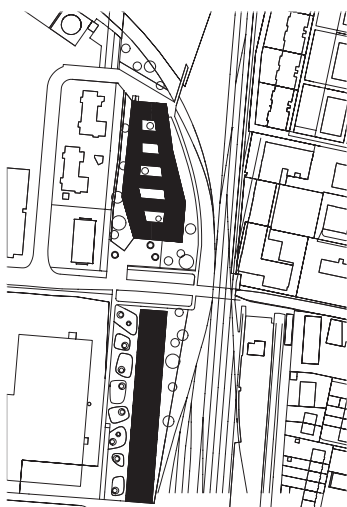
PLAN GROUND FLOOR LIVING CLUB



PLAN
GROUND FLOOR
SHOW CASE



LOCATION



Competition for the Zug Schleife area

Client

SBB Real Estate

Type of procedure

Parallel study contract with prequalification SBB ZugSchleife area, 2006

Bauart Architects and Planners Ltd

Frei | Graf | Graf | Jakob | Rey | Ringeisen | Ryter

Laupenstrasse 20, 3008 Bern

T 031 385 15 15

Crêt-Taconnet 17, 2002 Neuchâtel

T 032 858 15 15

Hardturmstrasse 173, 8005 Zürich

T 043 366 65 65

www.bauart.ch