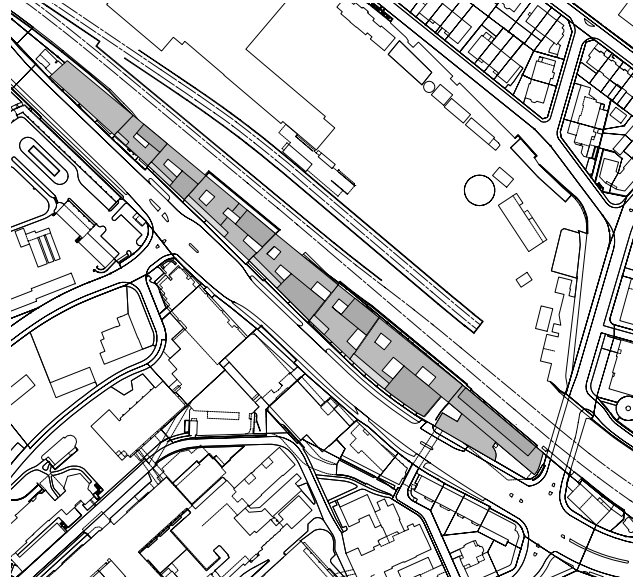
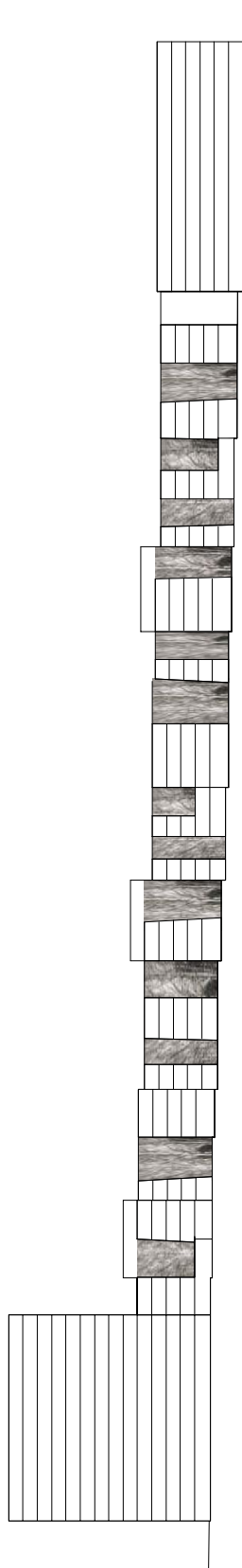
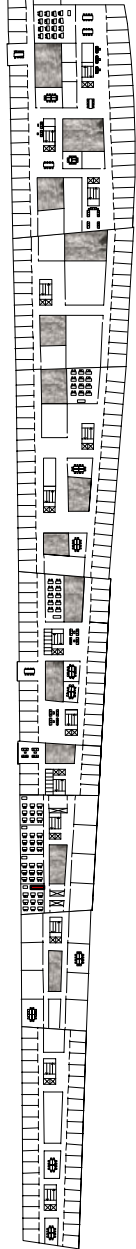
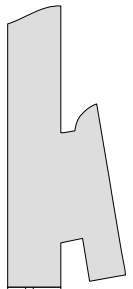


**Building density into the north side of the Inselspital Bern** Densification of the urban wasteland located in the western part of the City of Bern is part of a vision of sustainable urban development upgrading a disused sector of town and optimizing the existing public transport network. Potential synergies and links with the Inselspital neighbourhood enable the gradual emergence of a key new centre which will boost the development of this part of town.



PLAN I SUCCESSIVE COURTYARDS GIVE RHYTHM AND LIGHT TO THE WHOLE LENGTH OF THE BUILDING. THEY ALSO ADD A TOUCH OF GREENERY FROM THE ROOF TO THE INTERIOR VOLUME

LONGITUDINAL SECTION I CREATION OF GREEN SPACES INSIDE THE BUILDING

SECTION I EACH COURTYARD CROSSES RIGHT THROUGH THE VOLUME TO THE EXTERIOR FAÇADE

**Building density into the north side of the  
Inselspital Bern**

*Location*

Bern

*Client*

Inselspital

University Hospital Bern

Urban Planning Department of the Canton of Bern

*Type of mandate*

Town-planning study 2004

*Floor space according to SIA 416*

46'670 m<sup>2</sup> above ground

29'960 m<sup>2</sup> below ground

Bauart Architects and Planners Ltd

Frei | Graf | Graf | Jakob | Rey | Ringeisen | Ryter

Laupenstrasse 20, 3008 Bern

T 031 385 15 15

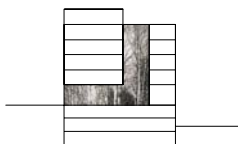
Crêt-Taconnet 17, 2002 Neuchâtel

T 032 858 15 15

Hardturmstrasse 173, 8005 Zürich

T 043 366 65 65

[www.bauart.ch](http://www.bauart.ch)



0 25 50