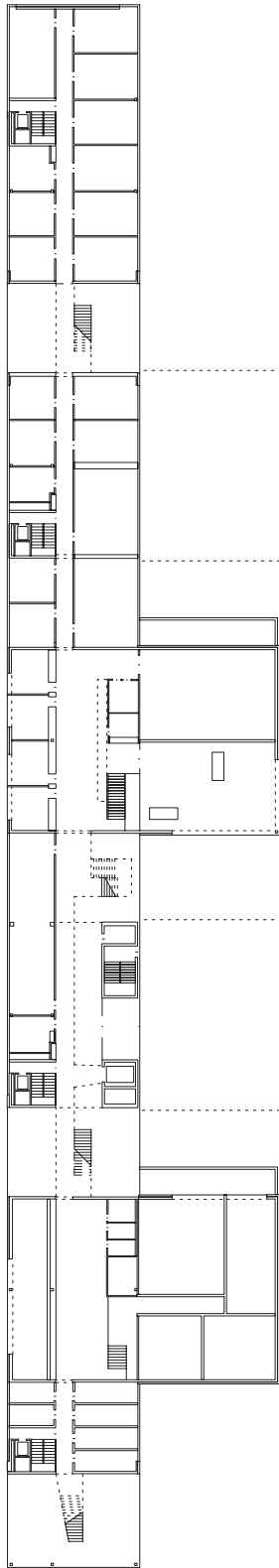


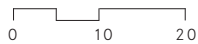


## Campus Arc 1 Neuchâtel

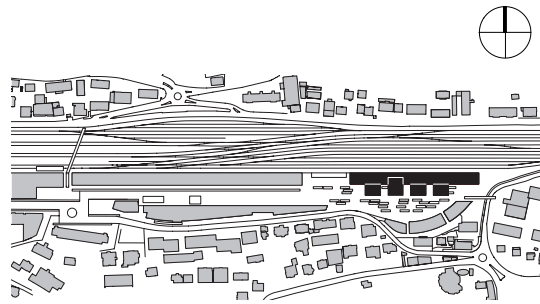
This educational building, which includes two institutions dedicated to education, is made up of three main elements: a four-level backbone, punctuated by double height transparent openings, and volumes cross-cutting the backbone. The building establishes a boundary with the railway field. Its presence structures the site and protects the central square of the neighborhood.



Plan groundfloor



Cross-section



Situation

## Campus Arc 1 Neuchâtel

### Location

Neuchâtel

### Client

Canton of Neuchâtel

### Services provided

Feasibility study, planning and realization

### Costs BCC 0-9

CHF 50 Mio

### Program

Music conservatory and Business school, underground parking

### Realization

2004 - 2009

Bauart Architects and Planners Ltd

Frei | Graf | Graf | Jakob | Rey | Ringeisen | Ryter

Laupenstrasse 20, 3008 Bern

Telefon +41 31 385 15 15

Crêt-Taconnet 17, 2002 Neuchâtel

Téléphone +41 32 858 15 15

Hardturmstrasse 173, 8005 Zürich

Telefon +41 43 366 65 65

[www.bauart.ch](http://www.bauart.ch)

**bauart**