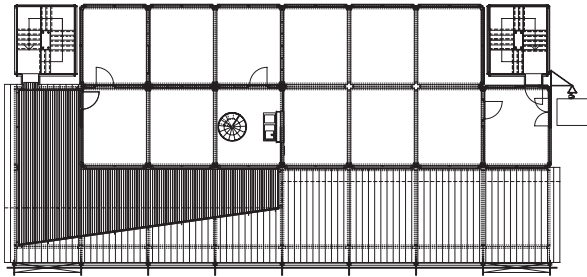
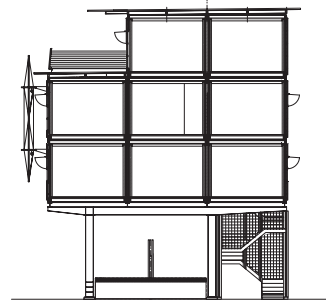




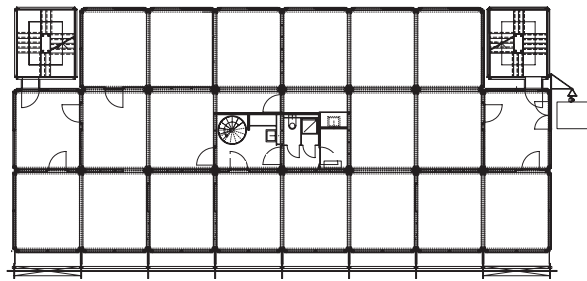
Modular-T | Neuchâtel This provisory building hosts offices, workshops and storage premises of SBB as well as Bauart's meeting rooms throughout the construction of the Swiss Federal Statistical Office. The three-story structure is made of wooden prefabricated containers, which comprise electrical, sanitary and heating installations. The latter are laid on a metallic structure, thus freeing the ground floor for loading ramps. The basic wooden elements meet the highest sustainability requirements in terms of production, operation and dismantling.



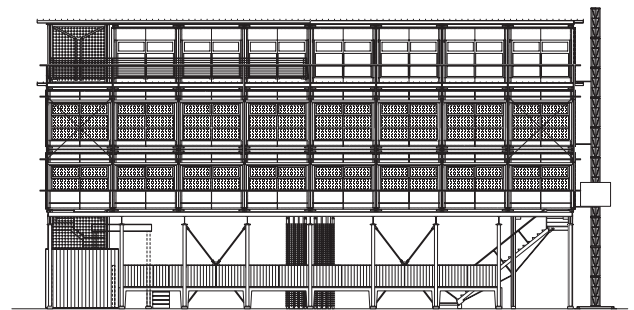
PLAN LEVEL +3



SECTION



PLAN LEVEL +2



SOUTHERN FAÇADE



Modular-T | Neuchâtel

Client

Federal Office for Buildings and Logistics (FOBL)

Construction

Bauart Architects and Planners Ltd / Riedo AG

Area

750 m² (57 modules of 13.2 m²),

6 entrances

Lifetime

Estimated to 30 years

Value when new

CHF 1.8 Mio

Operation

1993 - 2008

Bauart Architects and Planners Ltd

Frei | Graf | Graf | Jakob | Rey | Ringeisen | Ryter

Laupenstrasse 20, 3008 Bern

T 031 385 15 15

Crêt-Taconnet 17, 2002 Neuchâtel

T 032 858 15 15

Hardturmstrasse 173, 8005 Zürich

T 043 366 65 65

www.bauart.ch