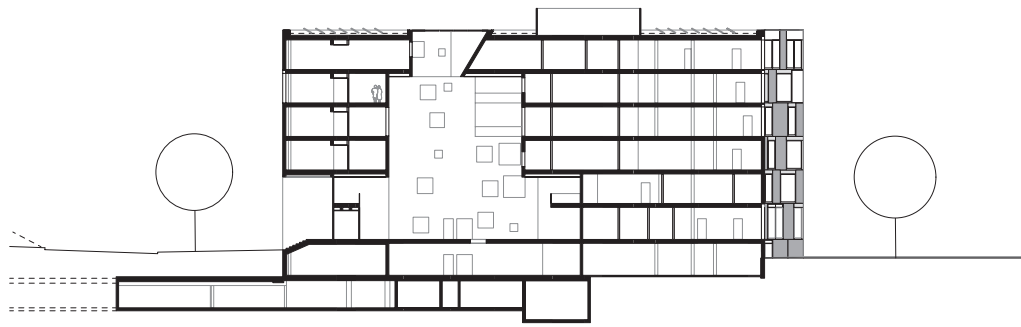


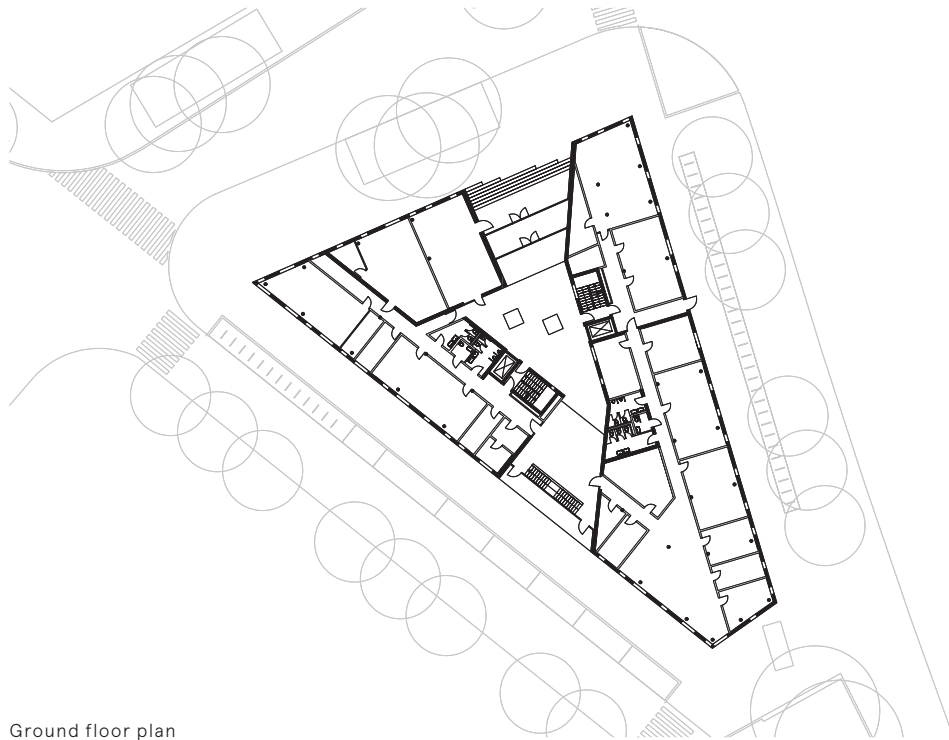
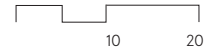


Patrimonium Building Crissier

The iconic Patrimonium Building, landmark of the new Oassis neighbourhood in West Lausanne, and its first structure to be completed, takes the form of a reflective anthracite monolith which fits in perfectly with the site's dynamic outlines and revolves round a mineral atrium at the building's heart. The atrium's specific shape and expressive features not only enhance natural lighting and link the different levels visually and functionally, they also give the whole space its unique identity. Four double-height openings, extending up the façades, are designed to create visual contact with the exterior. A fifth opening, similarly shaped but vertically aligned, passes across the last floor to let in zenithal light and at the same time contribute to the building's natural ventilation.



Section through the atrium



Ground floor plan

Patrimonium Building Crissier

Location

Crissier (VD)

Client

Patrimonium

General contractor

Losinger Marazzi

Procedure

Invited parallel study contract | 1st prize | 2012

Realization

2017 - 2019

Bauart Architects and Planners Ltd

Graf | Graf | Jakob | Rey | Ringeisen

Laupenstrasse 20, 3008 Bern

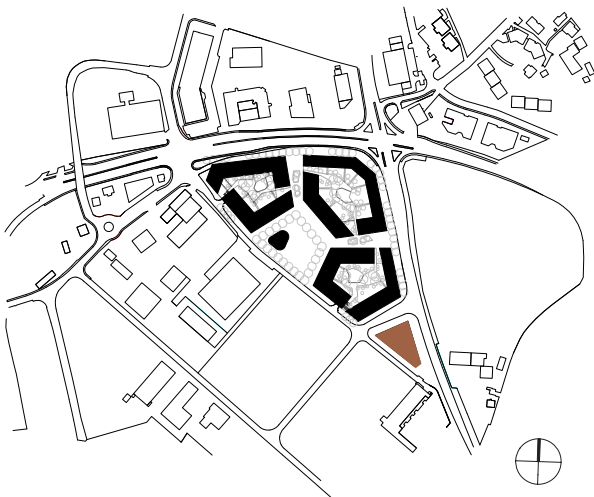
Telefon +41 31 385 15 15

Crêt-Taconnet 17, 2002 Neuchâtel

Téléphone +41 32 858 15 15

Zimmerlistrasse 6, 8004 Zürich

Telefon +41 43 366 65 65



Situation

www.bauart.ch

bauart