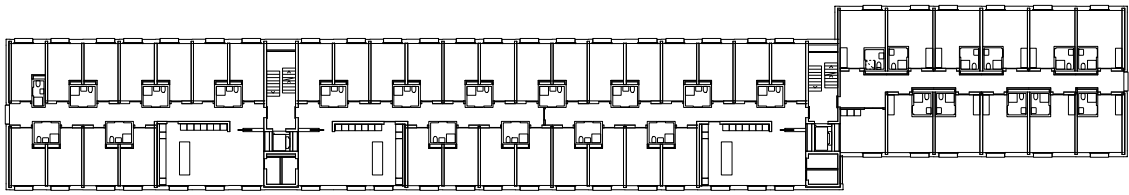


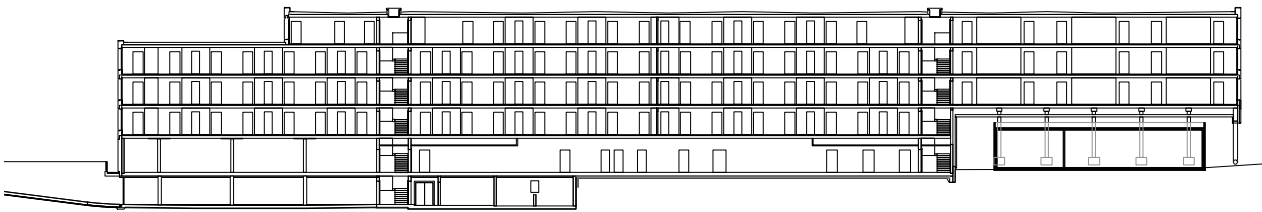


## Students Lodge Bolligen

The topographical staging of the site combined with effective land use and particularly successful teamwork among all the stakeholders of the project has enabled the creation of this ambitious streamlined construction along the railway line. The building comprises two volumes with three levels each. Its vertical dark-wood panelling façade is sequenced by wide windows that guarantee optimal light supply throughout the building.

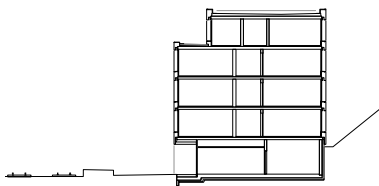


1st Floor

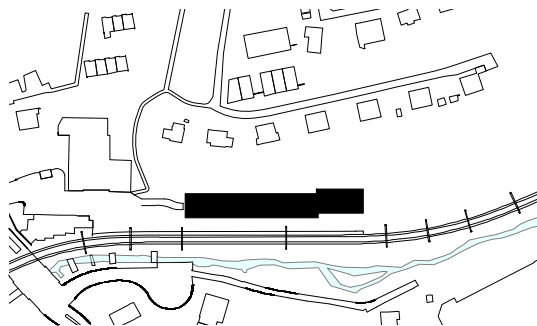


Section

0 5 10 20



Cross-section



Situation

## Students Lodge Bolligen

### Location

Bolligen (BE)

### Client

PAT BVG, Medical doctors and vets Pensions' fund

### Realization

2014 - 2016

### Program

120 Students room (+ common room)

Surface 3'070 m<sup>2</sup>

33 Studio (+ common room)

Surface 880 m<sup>2</sup>

Services / Shops on the groundfloor

Surface 500 m<sup>2</sup>

Total Nutzfläche 5'350 m<sup>2</sup>

Parking (14 PP)

### Building volume (SIA 416)

19'400 m<sup>3</sup>

### Floor surface (SIA 416)

6'500 m<sup>2</sup>

Bauart Architects and Planners Ltd  
 Frei | Graf | Graf | Jakob | Rey | Ringeisen

Laupenstrasse 20, 3008 Bern  
 Telefon +41 31 385 15 15  
 Crêt-Taconnet 17, 2002 Neuchâtel  
 Téléphone +41 32 858 15 15  
 Hardturmstrasse 173, 8005 Zürich  
 Telefon +41 43 366 65 65

[www.bauart.ch](http://www.bauart.ch)

**bauart**