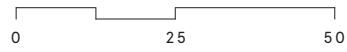
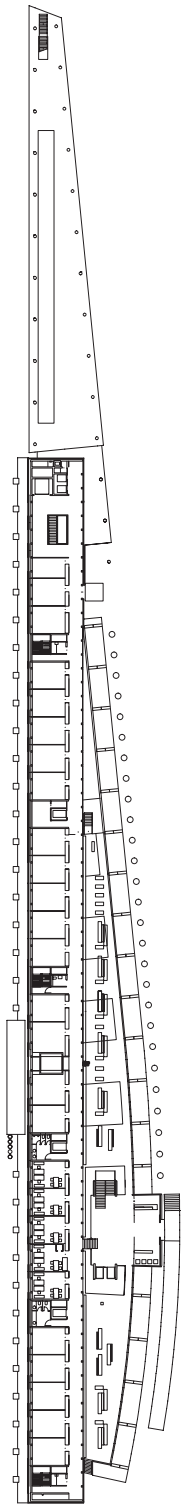




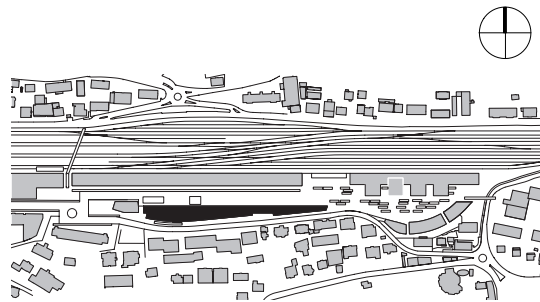
Swiss Federal Statistical Office Neuchâtel

Situated on the Neuchâtel train station plateau, the building is shaped to match the straight line of the railways on the northern side. On the southern side, towards the lake, it follows the curve of Crêt-Taconnet street. As a result, rich spatiality emerges based on this duality between the straight line and the curve, clearly noticeable at the various interior atriums level. Integrating multiple sustainability considerations, this realization is characterized by the increased use of natural ventilation, passive cooling and high energy performance (100 MJ/m²/year of thermal energy and 200 MJ/m²/year of electric energy, including calculation center).



Plan groundfloor | The main entrance is located seaside. It leads to a huge space and to the exhibition hall

Cross-section | An intricate assemblage of air wells, stairways, elevators and connecting bridges - framed by corridors - form a softly flowing spatial sequence. The restaurant is located on the upper floor



Intégration au sein du quartier Ecoparc

Swiss Federal Statistical Office- Neuchâtel

Location

Neuchâtel

Client

Swiss Federal Office for Building and Logistics SFBL

Procedure

Concours 1990

Cost estimate BCC 1-9

CHF 130 Mio

Cost/m³ BCC 2

CHF 710.-

Realization

1994 - 1998

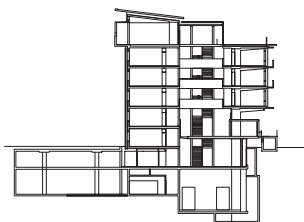
Distinctions

Architecture award SIB 1997

Swiss solar award 1998

European solar award 1998

Energy Globe Award Wien, "Best 50" 2001



Bauart Architects and Planners Ltd

Frei | Graf | Graf | Jakob | Rey | Ringeisen | Ryter

Laupenstrasse 20, 3008 Bern

Telefon +41 31 385 15 15

Crêt-Taconnet 17, 2002 Neuchâtel

Téléphone +41 32 858 15 15

Hardturmstrasse 173, 8005 Zürich

Telefon +41 43 366 65 65

www.bauart.ch

bauart