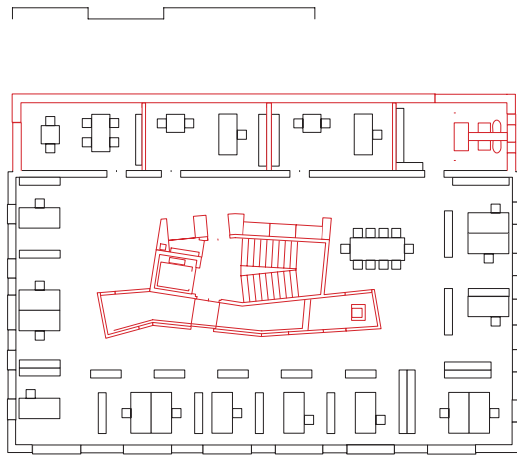




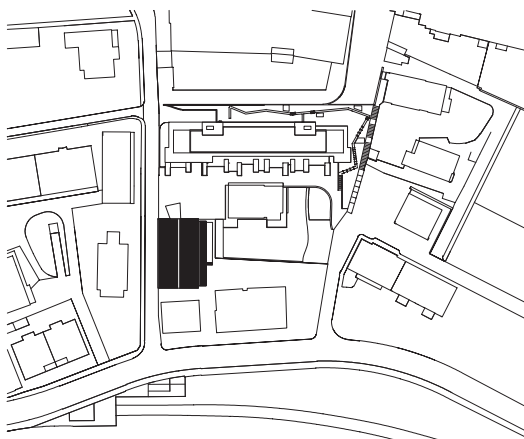
**Transformation of the Swiss National Science Foundation's porter's lodge** The former buildings of Dr. Wander (development of the first Ovomaltine chocolate bars) currently host the new reception and direction buildings of the SNSF, main Swiss institution to promote and sponsor scientific research. The innovative spirit should be maintained through the transformation. The new buildings are clearly distinct from the protected monument. A new construction replaces the former veranda and completes the initial building's volumetry. Inside, a new core organizes both vertical distribution and targeted penetration of natural light.



SECTION | DAYLIGHT IS BROUGHT INSIDE THE BUILDING



1ST FLOOR | OPEN SPACE



**Transformation of the Swiss National Science Foundation's porter's lodge**

*Builder*

FIMO SA, Thun

Swiss National Science Foundation, Bern

*Project development*

FIMO SA, Thun / Bauart, Bern

*General contractor*

Frutiger Entreprise Générale SA, Thun

Costs BCC 1-9

CHF 3,05 Mio.

Costs/m<sup>3</sup> BCC 2

CHF 300/m<sup>3</sup>

*Realization*

2003 - 2005

Bauart Architects and Planners Ltd

Frei | Graf | Graf | Jakob | Rey | Ringeisen | Ryter

Laupenstrasse 20, 3008 Bern

T 031 385 15 15

Crêt-Taconnet 17, 2002 Neuchâtel

T 032 858 15 15

Hardturmstrasse 173, 8005 Zürich

T 043 366 65 65

[www.bauart.ch](http://www.bauart.ch)