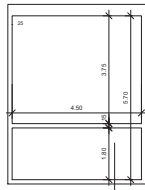
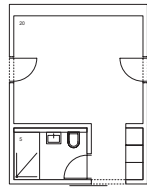




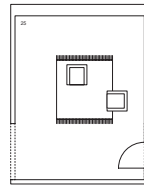
swisswoodhouse est une réflexion autour de l'immeuble d'habitation menée conjointement entre Renggli SA et Bauart Architectes et Urbanistes SA. Le concept novateur et sa mise en œuvre constructive permettent une très grande flexibilité d'usage des espaces. L'idée de base de la maison repose sur un module à fonction neutre de 25 m². L'acquéreur peut concevoir le plan de son logement d'après un catalogue en combinant et en adaptant les modules individuels selon ses besoins.



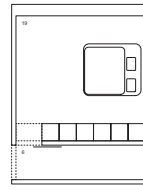
MODULE DE BASE



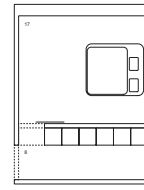
TYPE ENTRÉE / DOUCHE



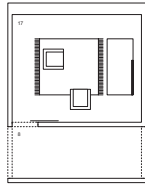
TYPE ENTRÉE



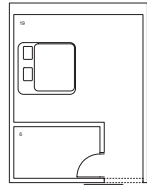
TYPE CHAMBRE / ACCÈS



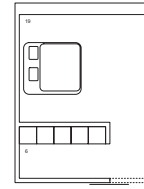
TYPE CHAMBRE / ACCÈS



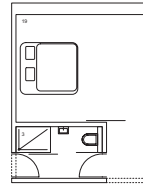
TYPE CHAMBRE / ACCÈS



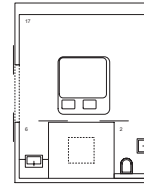
TYPE DORMIR / REDUIT



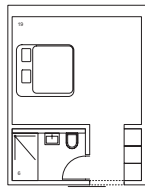
TYPE DORMIR / DRESSING



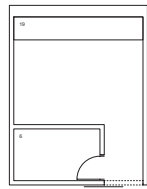
TYPE DORMIR / DOUCHE



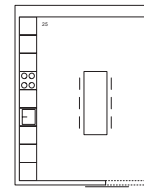
TYPE DORMIR / DOUCHE / WC



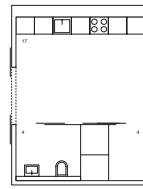
TYPE HÔTEL / STUDIO



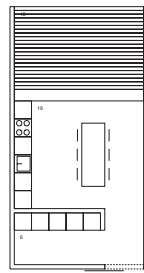
TYPE RANGEMENT / REDUIT



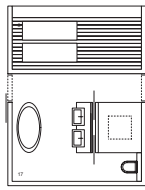
TYPE CUISINE



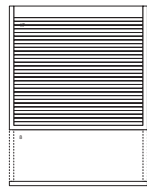
TYPE CUISINE / REDUIT / WC



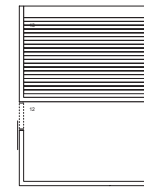
TYPE CUISINE / SERVICE / LOGGIA



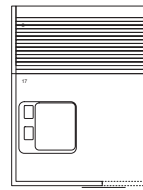
TYPE WELLNESS



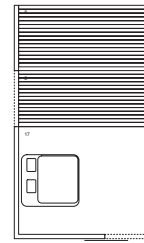
TYPE LOGGIA / ACCÈS



TYPE LOGGIA / CHAMBRE

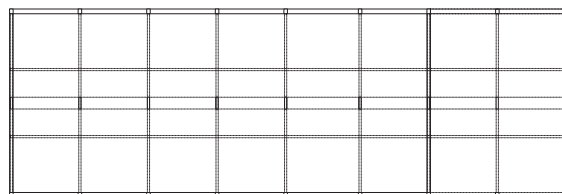


TYPE LOGGIA / CHAMBRE



TYPE LOGGIA / CHAMBRE

CHOIX POSSIBLES BASÉS SUR LE MODULE DE BASE



MODULE DE BASE



swisswoodhouse
Appartements modulaires

Conception
Bauart Architectes et Urbanistes SA
Renggli AG (www.renggli-haus.ch)

Système
Construction en bois

Surface
Individuelle selon des modules
de 25 m²

Bauart Architectes et Urbanistes SA
Frei | Graf | Graf | Jakob | Rey | Ringeisen | Rytter

Laupenstrasse 20, 3008 Bern
T 031 385 15 15
Crêt-Taconnet 17, 2002 Neuchâtel
T 032 858 15 15
Hardturmstrasse 173, 8005 Zürich
T 043 366 65 65

www.bauart.ch